

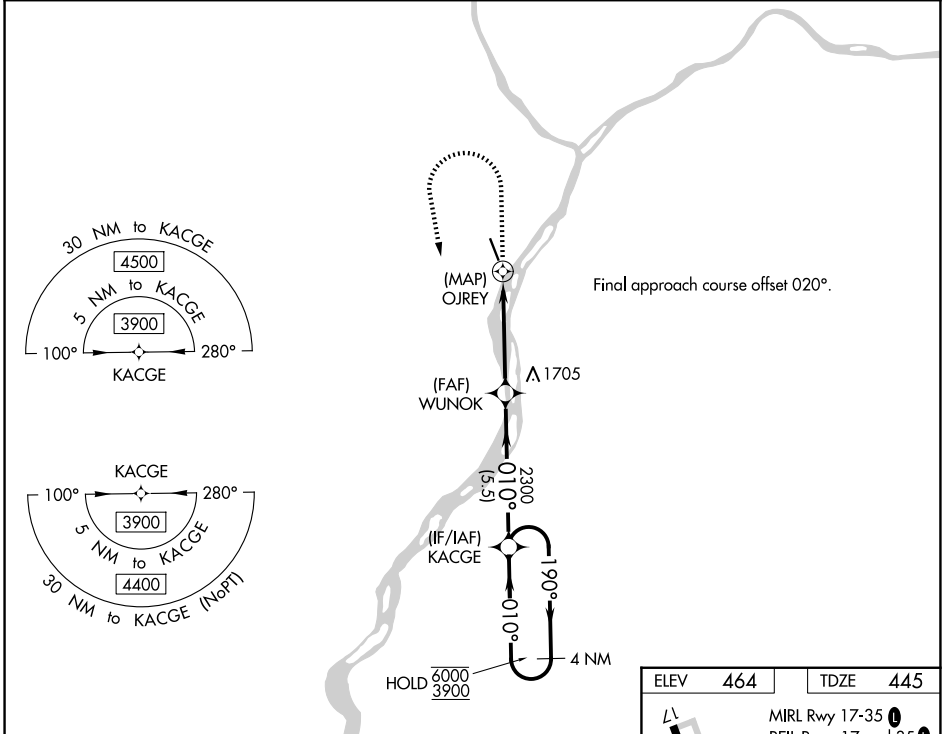
WAAS CH 49139 W35A	APP CRS 010°	Rwy Ldg TDZE Apt Elev	4510 445 464
--	------------------------	-----------------------------	---

RNAV (GPS) RWY 35

PENN VALLEY (SE/G)

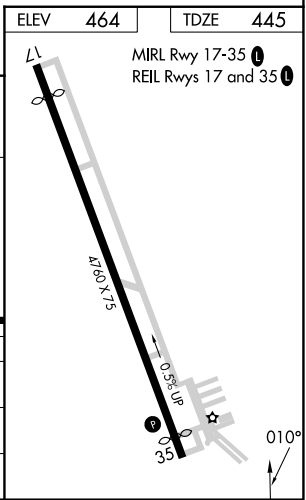
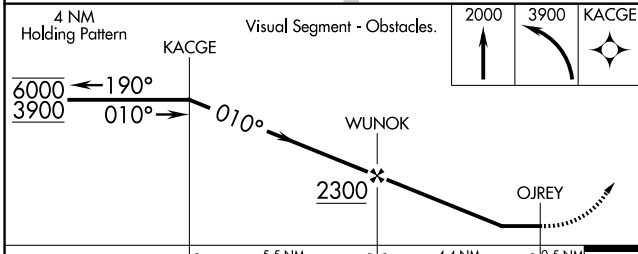
RNP APCH - GPS.		MISSED APPROACH: Climb to 2000 then climbing left turn to 3900 direct KACGE and hold.	
<p>⚠ Rwy 35 helicopter visibility reduction below 1 SM NA. Circling Rwy 17 NA at night. ⚠ Straight-in Rwy 35 at night, operational VGSI required, remain on or above VGSI glidepath until threshold. ⚠ -13°C</p>			

ASOS 123.975	HARRISBURG APP CON 118.25 269.45	UNICOM 122.7 (CTAF) 0
------------------------	--	---------------------------------



NE-4, 11 JUN 2026 to 09 JUL 2026

NE-4, 11 JUN 2026 to 09 JUL 2026



CATEGORY	A	B	C	D
LP MDA	1200-1 755 (800-1)	1200-1¼ 755 (800-1¼)	1200-2	755 (800-2)
LNAV MDA	1860-1¼ 1415 (1400-1¼)	1860-1½ 1415 (1400-1½)	1860-3	1415 (1400-3)
CIRCLING	1860-1¼ 1396 (1400-1¼)	1860-1½ 1396 (1400-1½)	1860-3	1396 (1400-3)