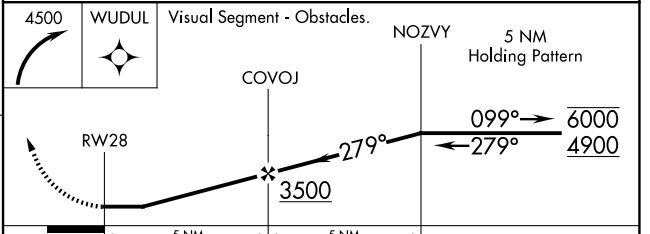
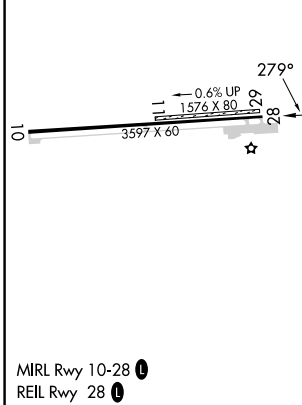
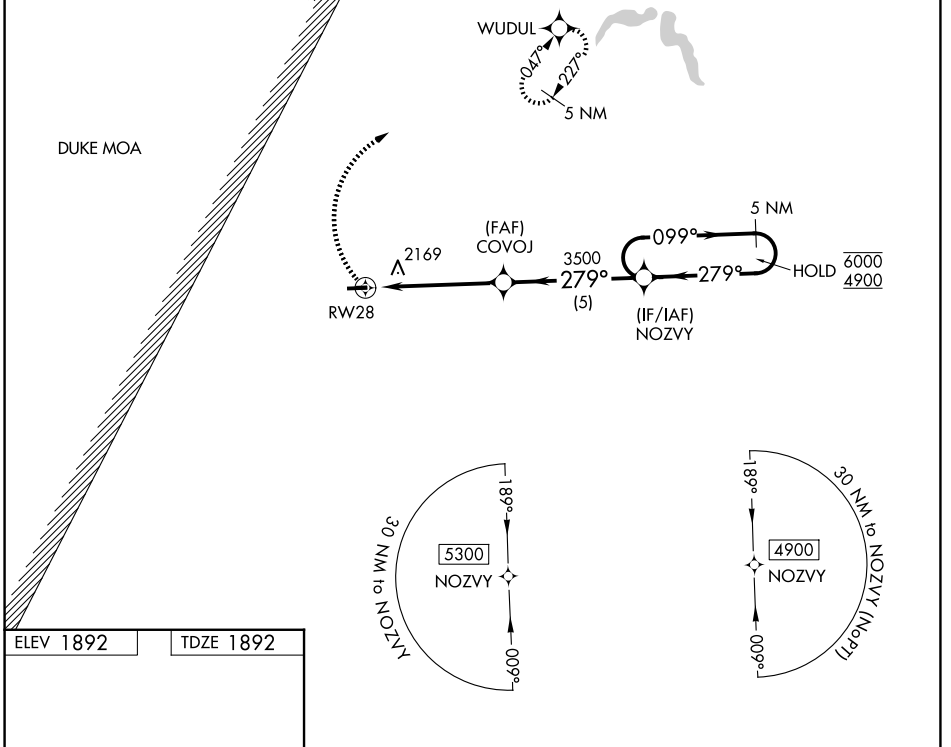


WAAS CH 99530 W28A	APP CRS 279°	Rwy Ldg TDZE Apt Elev	3597 1892 1892
--	------------------------	-----------------------------	---

RNAV (GPS) RWY 28

GRAND CANYON RGNL (N38)

RNP APCH - GPS.		MISSED APPROACH: Climbing right turn to 4500 direct WUDUL and hold.
<p>▼ Procedure NA at night. Rwy 28 helicopter visibility reduction below 1 SM NA. ▲ Circling NA to Rwys 11 and 29. When local altimeter setting not received, use ELZ altimeter setting and increase all MDAs 120 feet and LP visibility Cat C 3/8 SM, LNAV visibility Cat C 1/4 SM, and Circling Cat A/B 1/4 SM, and Cat C 1/2 SM.</p>		
AWOS-3PT 120.925	ELMIRA APP CON ★ 128.425 257.8	UNICOM 122.8 (CTAF) 0



CATEGORY	A	B	C	D
LP MDA	2380-1	488 (500-1)	2380-1 3/8 488 (500-1 3/8)	NA
LNAV MDA	2480-1	588 (600-1)	2480-1 1/4 588 (600-1 1/4)	NA
CIRCLING	2680-1	788 (800-1)	2740-2 1/2 848 (900-2 1/2)	NA

NE-4, 11 JUN 2026 to 09 JUL 2026

NE-4, 11 JUN 2026 to 09 JUL 2026