

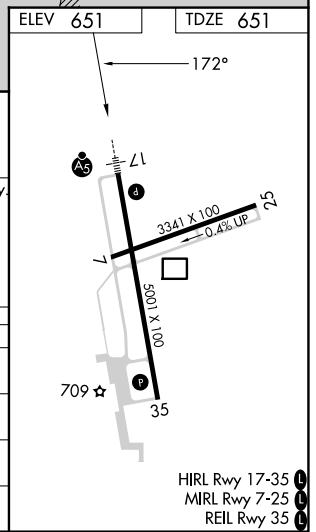
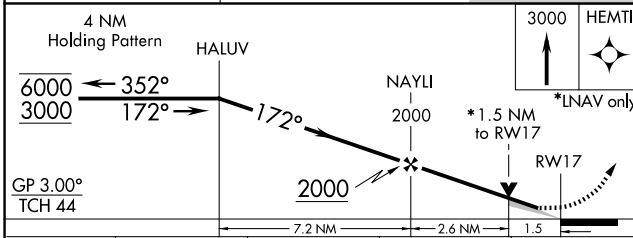
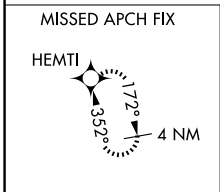
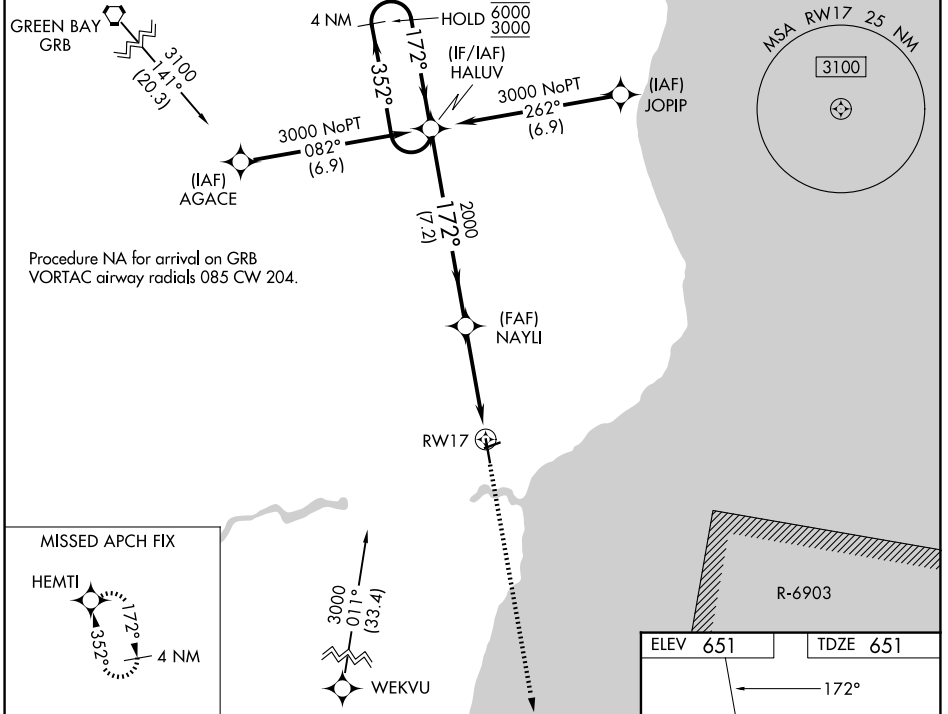
WAAS CH <b>63111</b> <b>W17A</b>	APP CRS <b>172°</b>	Rwy Ldg TDZE Apt Elev	<b>5001</b> <b>651</b> <b>651</b>
--	------------------------	-----------------------------	---

# RNAV (GPS) RWY 17

MANITOWOC COUNTY (MTW)

RNP APCH.	<p>▼ For uncompensated Baro-VNAV systems, LNAV/VNAV NA below -16°C or above 54°C. For inop ALS, increase LNAV/VNAV all Cats visibility to 7/8 SM.</p>	<p>MALSR </p>	<p>MISSED APPROACH: Climb to 3000 direct HEMTI and hold.</p>
-----------	---	---------------	--

AWOS-3PT <b>123.775</b>	GREEN BAY APP CON * <b>120.2 338.2</b>	UNICOM <b>122.8 (CTAF)</b>
----------------------------	---	-------------------------------



CATEGORY	A	B	C	D
LPV DA		851-1/2	200 (200-1/2)	
LNAV/VNAV DA		942-1/2	291 (300-1/2)	
LNAV MDA	1180-1/2	529 (600-1/2)	1180-1	529 (600-1)
CIRCLING	1200-1	549 (600-1)	1420-2 1/4 769 (800-2 1/4)	1480-2 3/4 829 (900-2 3/4)

EC-3, 11 JUN 2026 to 09 JUL 2026

EC-3, 11 JUN 2026 to 09 JUL 2026