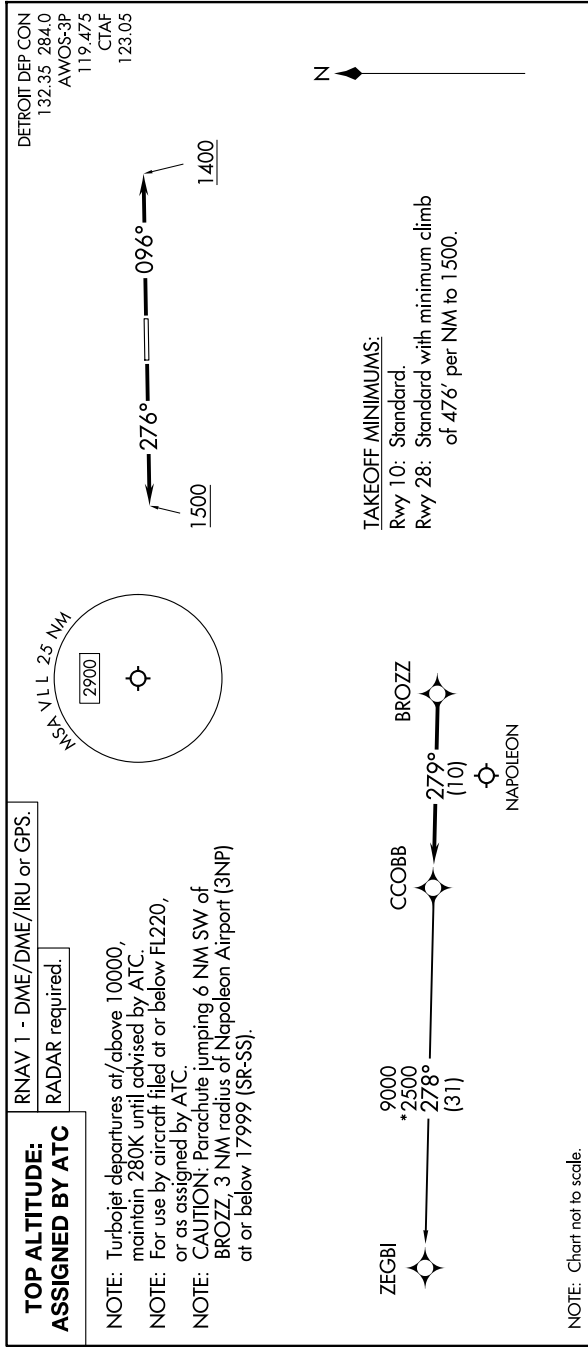


EC-1, 11 JUN 2026 to 09 JUL 2026



DEPARTURE ROUTE DESCRIPTION

TAKEOFF RUNWAY 10: Climb on heading 096° to 1400 then as assigned by ATC, thence...

TAKEOFF RUNWAY 28: Climb on heading 276° to 1500 then as assigned by ATC, thence...

...for RADAR vectors to BROZZ, then on track 279° to CCOBB, then on (transition). Maintain ATC assigned altitude, expect filed altitude 10 minutes after departure.

ZEGBI TRANSITION (CCOBB3_ZEGBI):

NOTE: Chart not to scale.

EC-1, 11 JUN 2026 to 09 JUL 2026