

EC-1, 11 JUN 2026 to 09 JUL 2026

DETROIT DEP CON
132.35 284.0
AWOS-3P
119.475
CTAF
123.05

TAKEOFF MINIMUMS:

Rwy 10: Standard.

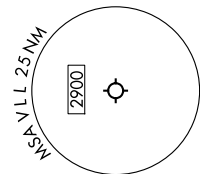
Rwy 28: Standard with minimum climb
of 476' per NM to 1500.

**TOP ALTITUDE:
ASSIGNED BY ATC**

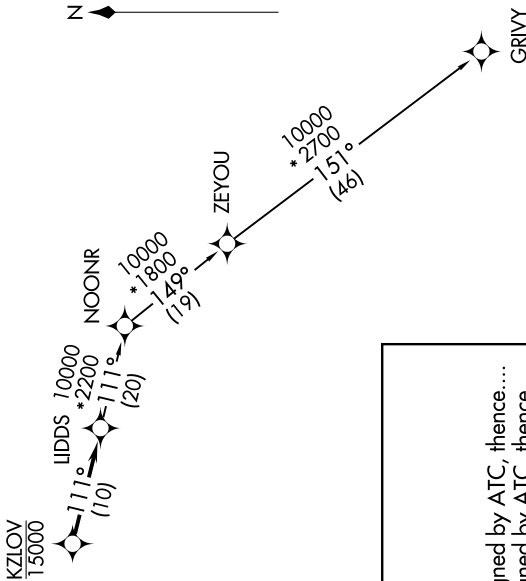
RNAV 1 - DME/DME/IRU or GPS.

RADAR required.

RADAR required for non-GPS equipped aircraft.



NOTE: Turbopjet departures at/above 10000,
maintain 280K until advised by ATC.



DEPARTURE ROUTE DESCRIPTION

TAKEOFF RUNWAY 10: Climb on heading 096° to 1400 then as assigned by ATC, thence....

TAKEOFF RUNWAY 28: Climb on heading 276° to 1500 then as assigned by ATC, thence....

...for RADAR vectors to cross KZLOV at or below 15000, then on track 111° to LIDDS, then on (transition). Maintain ATC assigned altitude, expect filed altitude 10 minutes after departure.

GRIVY TRANSITION (LIDDS4.GRIVY):

NOTE: Chart not to scale.

EC-1, 11 JUN 2026 to 09 JUL 2026