

EC-1, 11 JUN 2026 to 09 JUL 2026

DEPARTURE ROUTE DESCRIPTION

TAKEOFF RUNWAY 10: Climb on heading 096° to 1400 then as assigned by ATC, thence....
TAKEOFF RUNWAY 28: Climb on heading 276° to 1500 then as assigned by ATC, thence....

....for RADAR vectors to JWELS, then on track 218° to SNDRS, then on (transition). Maintain ATC assigned altitude, expect filed altitude 10 minutes after departure.

BGHRT TRANSITION (SNDRS3.BGHRT):
TORRR TRANSITION (SNDRS3.TORRR):

NOTE: Turbojet departures at/above 10000, maintain 280K until advised by ATC.

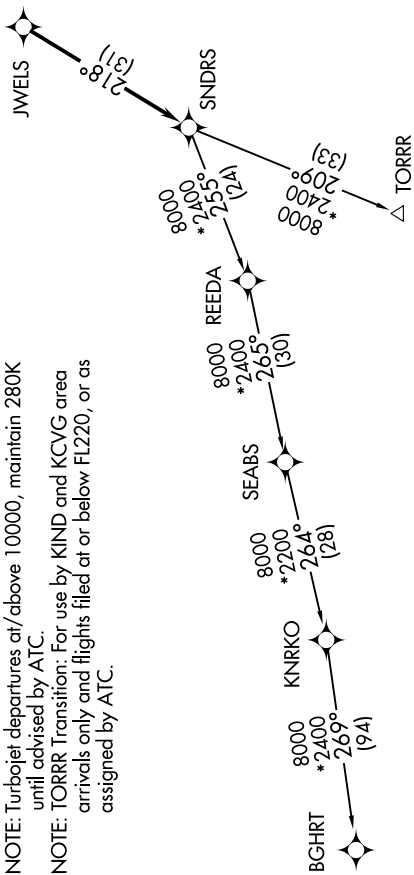
NOTE: TORRR Transition: For use by KIND and KCVG area arrivals only and flights filed at or below FL220, or as assigned by ATC.

TOP ALTITUDE:
ASSIGNED BY ATC

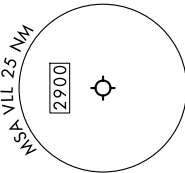
RNAV-1 DME/DME/IRU or GPS.
RADAR required.

DETROIT DEP CON
132.35 284.0
AWOS-3P
119.475
CTAF
123.05

N



TAKEOFF MINIMUMS:
Rwy 10: Standard.
Rwy 28: Standard with minimum climb of 476' per NM to 1500.



NOTE: Chart not to scale.

EC-1, 11 JUN 2026 to 09 JUL 2026