

WAAS CH <b>50118</b> <b>W12A</b>	APP CRS <b>123°</b>	Rwy Ldg TDZE Apt Elev	<b>5698</b> <b>2583</b> <b>2583</b>
--	------------------------	-----------------------------	---

# RNAV (GPS) RWY 12

MC COOK BEN NELSON RGNL (MCK)

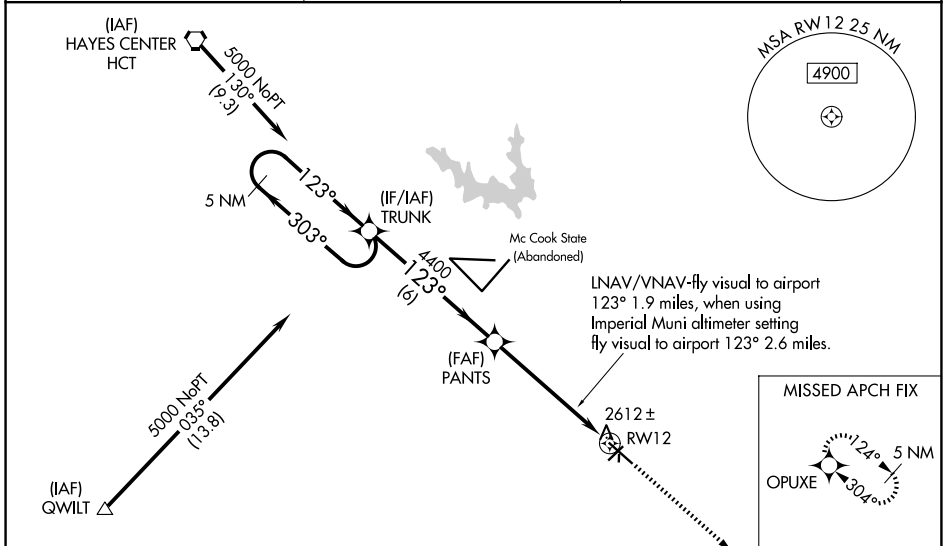
RNP APCH-GPS.

**⚠** Circling NA to Rwys 17 and 35. For uncompensated Baro-VNAV systems, LNAV/VNAV NA below -20°C or above 54°C. Baro-VNAV and VDP NA when using Imperial Muni altimeter setting. For inoperative MALSR, increase LPV all Cats visibility to 1, when using Imperial Muni altimeter setting increase LPV all Cats visibility to 1 3/4 and LNAV visibility Cat A to 1. Inoperative table does not apply to LNAV/VNAV. When local altimeter setting not received, use Imperial Muni altimeter setting and increase all DAs 213 feet, and LPV all Cats visibility 3/4 mile, LNAV/VNAV Cat C visibility 1/2 mile; increase all MDAs 220 feet, and LNAV and Circling visibility Cats A and B 1/4 mile, Cat C 1 mile.

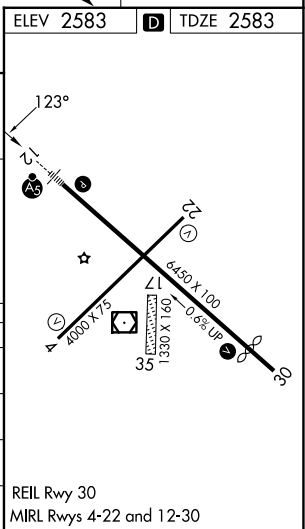
**MALSR**

**MISSED APPROACH:** Climb to 5000 direct OPUXE and hold.

ASOS <b>119.025</b>	DENVER CENTER <b>132.7 226.675</b>	UNICOM <b>122.8 (CTAF)</b>
------------------------	---------------------------------------	-------------------------------



5 NM Holding Pattern	TRUNK	LNNAV/VNAV-fly visual to airport 123° 1.9 miles, when using Imperial Muni altimeter setting fly visual to airport 123° 2.6 miles.	5000 OPUXE	
5000 ← 303°	→ 123°	PANTS	*LNNAV only	
GP 3.00° TCH 39	4400	*1.8 NM to RWY 12	RWY 12	
	6 NM	3.7 NM	1.8 NM	
CATEGORY	A	B	C	D
LPV DA	2840-1/2	257 (300-1/2)		NA
LNNAV/VNAV DA	3240-2	657 (700-2)		NA
LNNAV MDA	3180-1/2	597 (600-1/2)	3180-1 597 (600-1)	NA
CIRCLING	3180-1	597 (600-1)	3360-2 1/4 777 (800-2 1/4)	NA



NC-2, 11 JUN 2026 to 09 JUL 2026

NC-2, 11 JUN 2026 to 09 JUL 2026