

WAAS CH <b>56218</b> <b>W30A</b>	APP CRS <b>304°</b>	Rwy Ldg TDZE Apt Elev	<b>5698</b> <b>2558</b> <b>2583</b>
--	------------------------	-----------------------------	---

# RNAV (GPS) RWY 30

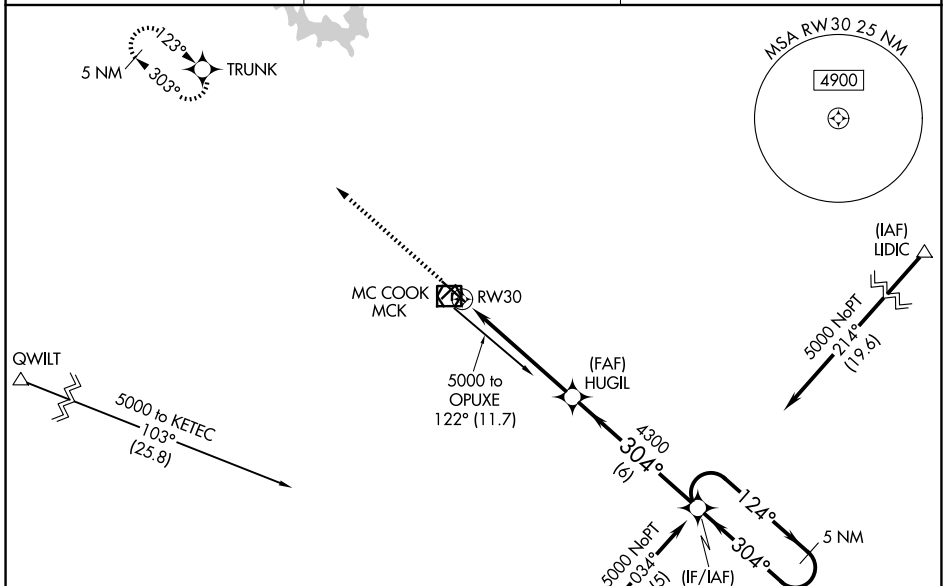
MC COOK BEN NELSON RGNL (MCK)

RNP APCH-GPS.

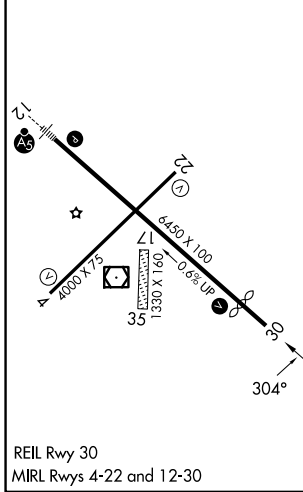
**▼** When local altimeter setting not received, use Imperial Muni altimeter setting: increase LPV DA to 3023 feet, and all visibilities  $\frac{1}{2}$  SM; increase LNAV/VNAV DA to 3079 feet and all visibilities  $\frac{3}{8}$  SM; increase all MDA's 220 feet and visibility Cat C  $\frac{3}{4}$  SM. Baro-VNAV and VDP NA when using Imperial Muni altimeter setting. Circling NA to Rwy 17 and 35. For uncompensated Baro-VNAV systems, LNAV/VNAV NA below -20°C or above 54°C.

MISSED APPROACH: Climb to 5000 direct TRUNK and hold.

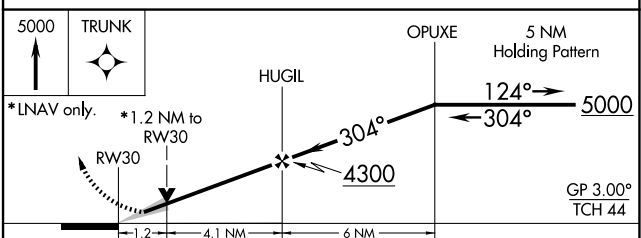
ASOS <b>119.025</b>	DENVER CENTER <b>132.7 226.675</b>	UNICOM <b>122.8 (CTAF) 0</b>
------------------------	---------------------------------------	---------------------------------



ELEV 2583	<b>D</b>	TDZE 2558
-----------	----------	-----------



REIL Rwy 30  
MIRL Rwy 4-22 and 12-30



CATEGORY	A	B	C	D
LPV DA	2810- $\frac{7}{8}$	252 (300- $\frac{7}{8}$ )		NA
LNAV/VNAV DA	2866-1	308 (300-1)		NA
LNAV MDA	2960-1	402 (400-1)	2960-1 $\frac{1}{8}$ 402 (400-1 $\frac{1}{8}$ )	NA
CIRCLING	3040-1 457 (500-1)	3120-1 537 (600-1)	3360-2 $\frac{1}{4}$ 777 (800-2 $\frac{1}{4}$ )	NA

NC-2, 11 JUN 2026 to 09 JUL 2026

NC-2, 11 JUN 2026 to 09 JUL 2026