

WAAS CH <b>78314</b> <b>W13A</b>	APP CRS <b>131°</b>	Rwy Ldg <b>6400</b> TDZE <b>1470</b> Apt Elev <b>1470</b>
--	------------------------	---

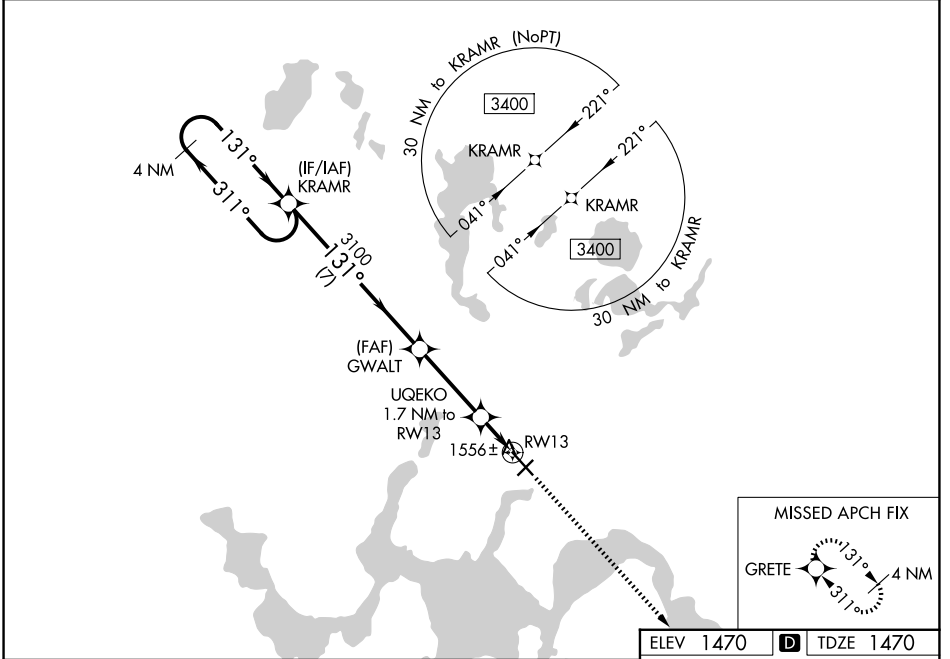
# RNAV (GPS) RWY 13

DEVILS LAKE RGNL (DVL)

**⚠** For uncompensated Baro-VNAV systems, LNAV/VNAV NA below -17°C (2°F) or above 54°C (130°F). DME/DME RNP-0.3 NA. Baro-VNAV and VDP NA when using Cando altimeter setting. When local altimeter setting not received, use Cando altimeter setting and increase all DA 63 feet and all MDA 80 feet, increase LPV and LNAV/VNAV all. Cats visibility ¼ mile, LNAV and Circling Cats C and D visibility ½ mile.

MISSED APPROACH: Climb to 3400 direct GRETE and hold.

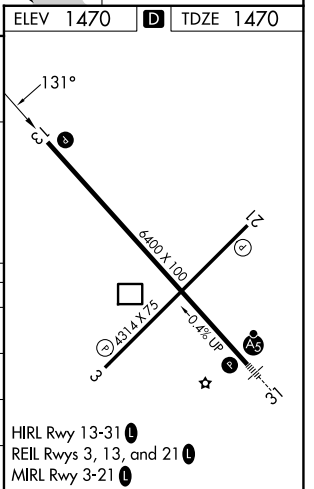
AWOS-3PT <b>125.875</b>	MINNEAPOLIS CENTER <b>124.2 270.3</b>	UNICOM <b>122.8 (CTAF)</b>
----------------------------	--	-------------------------------



NC-1, 11 JUN 2026 to 09 JUL 2026

NC-1, 11 JUN 2026 to 09 JUL 2026

4 NM Holding Pattern		VGSI and RNAV glidepath not coincident (VGSI Angle 3.00/TCH 45).		3400 GRETE
KRAMR		GWALT	UQEKO 1.7 NM to RW13	*LNAV only.
3400 ← 311°	→ 131°	3100	*0.9 NM to RW13	
GP 3.00°	TCH 50	*2060	RW13	
7 NM		3.3 NM	0.8 NM	0.9 NM
CATEGORY	A	B	C	D
LPV DA		1720-3/4	250 (300-3/4)	
LNAV/VNAV DA		1791-1	321 (400-1)	
LNAV MDA		1820-1	350 (400-1)	
CIRCLING	2000-1	530 (600-1)	2240-2 1/4 770 (800-2 1/4)	2240-2 1/2 770 (800-2 1/2)



HIRL Rwy 13-31  
REIL Rws 3, 13, and 21  
MIRL Rwy 3-21