

|  |                        |                             |   |
|--|------------------------|-----------------------------|---|
| WAAS<br>CH <b>78417</b><br><b>W21A</b> | APP CRS<br><b>218°</b> | Rwy Ldg<br>TDZE<br>Apt Elev | <b>4314</b><br><b>1449</b><br><b>1469</b> |
|--|------------------------|-----------------------------|---|

# RNAV (GPS) RWY 21

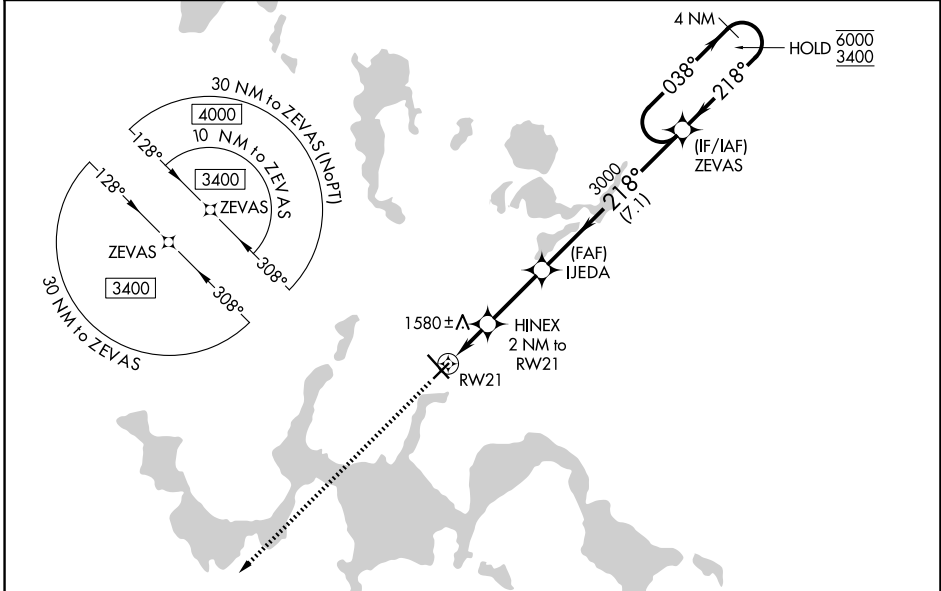
DEVILS LAKE RGNL (DVL)

RNP APCH - GPS.

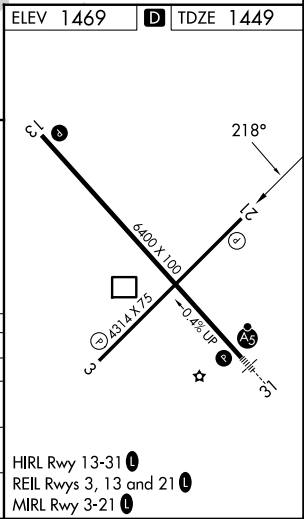
⚠ For uncompensated Baro-VNAV systems, LNAV/VNAV NA below -17°C or above 54°C. Baro-VNAV and VDP NA when using 9D7 altimeter setting. Rwy 21 helicopter visibility reduction below 3/4 SM NA. When local altimeter setting not received, use 9D7 altimeter setting and increase LPV DA to 1760 feet; increase LNAV/VNAV DA to 1901 feet and all visibilities 1/4 SM. Increase all MDAs 80 feet and LNAV visibility Cat C/D 1/4 SM, and Circling visibility Cat C/D 1/4 SM.

MISSED APPROACH:  
Climb to 3400 direct  
ZIKID and hold.

|                            |  |                               |
|----------------------------|--|-------------------------------|
| AWOS-3PT<br><b>125.875</b> | MINNEAPOLIS CENTER<br><b>124.2 270.3</b> | UNICOM<br><b>122.8 (CTAF)</b> |
|----------------------------|--|-------------------------------|



|  |  |             |                               |                               |
|--|--|-------------|-------------------------------|-------------------------------|
| 3400<br>ZIKID<br>VGSI and RNAV glidepath not coincident<br>(VGSI Angle 3.00/TCH 25).<br>HINEX<br>2 NM to<br>RWY 21<br>1.2 NM to<br>RWY 21<br>RWY 21<br>1.2 0.8 2.7 NM 7.1 NM | ZEVAS  |             | 4 NM Holding Pattern          |                               |
|  | 3000<br>218° → 6000<br>← 218° 3400<br>GP 3.00°<br>TCH 50 |             | 038° → 6000<br>← 218° 3400    |                               |
| CATEGORY   | A  | B           | C                             | D                             |
| LPV DA   | 1699-1   |             | 250 (300-1)                   |                               |
| LNAV/VNAV DA   | 1840-1 1/8   |             | 391 (400-1 1/8)               |                               |
| LNAV MDA   | 1840-1   | 391 (400-1) | 1840-1 1/8                    | 391 (400-1 1/8)               |
| CIRCLING   | 2000-1   | 531 (600-1) | 2240-2 1/4<br>771 (800-2 1/4) | 2240-2 1/2<br>771 (800-2 1/2) |



NC-1, 11 JUN 2026 to 09 JUL 2026

NC-1, 11 JUN 2026 to 09 JUL 2026