

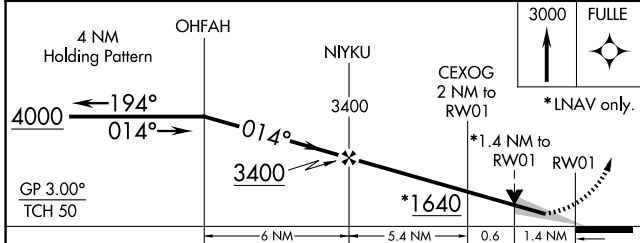
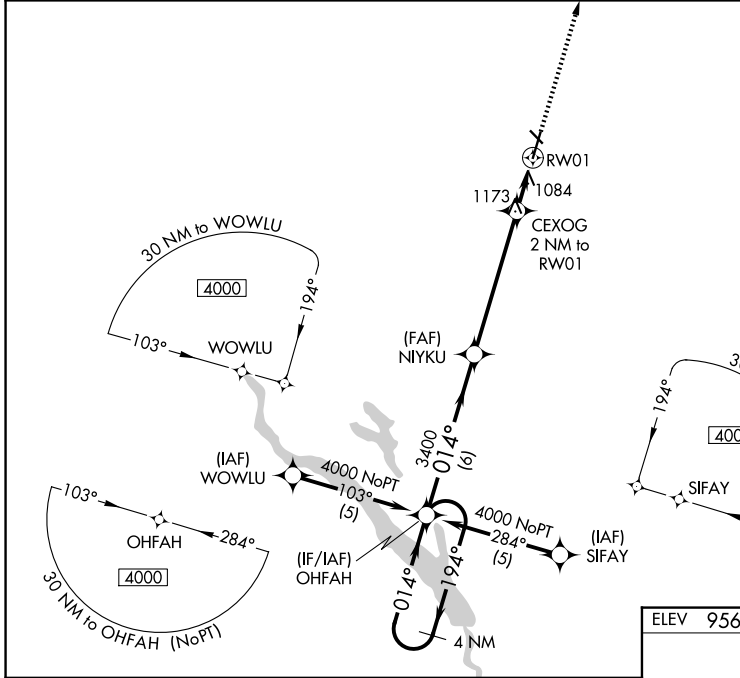
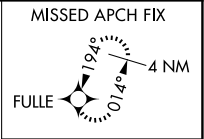
WAAS CH 72717 W01A	APP CRS 014°	Rwy Ldg TDZE Apt Elev	5701 956 956
--	------------------------	-----------------------------	---

RNAV (GPS) RWY 1

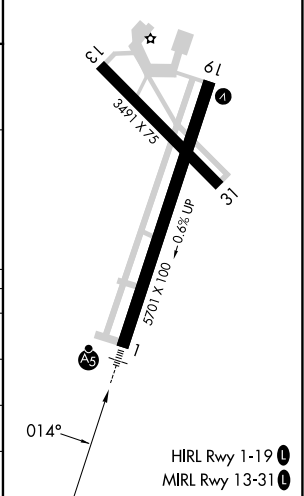
AMES MUNI (AMW)

RNP APCH.	<p>▼ For uncompensated Baro-VNAV systems, LNAV/VNAV NA below -16°C (4°F) or above 54°C (130°F). For inop MALSRS, increase LNAV Cats A, B visibility to 1 mile.</p>	MALSRS	<p>MISSED APPROACH: Climb to 3000 direct FULLE and hold.</p>
❄ -26°C			

ASOS 132.025	DES MOINES APP CON 123.9 307.15	CLNC DEL 126.0	UNICOM 122.7 (CTAF) 0
------------------------	---	--------------------------	---------------------------------



ELEV 956	TDZE 956
----------	----------



CATEGORY	A	B	C	D
LPV DA	1261-3/4	305 (400-3/4)		NA
LNAV/VNAV DA	1364-1	408 (500-1)		NA
LNAV MDA	1440-3/4	484 (500-3/4)		NA
CIRCLING	1440-1 484 (500-1)	1460-1 504 (600-1)	1640-2 684 (700-2)	NA

NC-3, 11 JUN 2026 to 09 JUL 2026

NC-3, 11 JUN 2026 to 09 JUL 2026