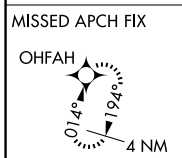
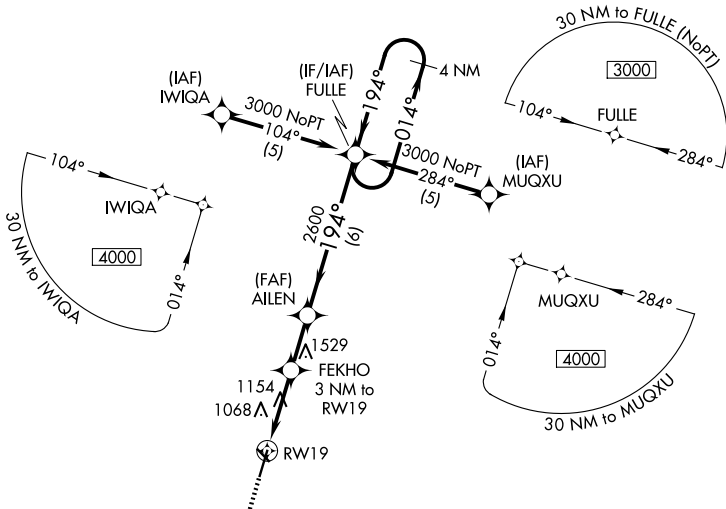


WAAS CH <b>61217</b> <b>W19A</b>	APP CRS <b>194°</b>	Rwy Ldg TDZE Apt Elev	<b>5701</b> <b>937</b> <b>956</b>
--	------------------------	-----------------------------	---

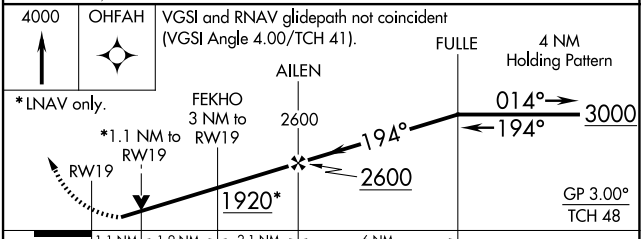
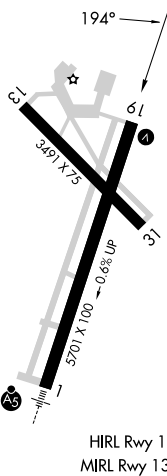
# RNAV (GPS) RWY 19

AMES MUNI (AMW)

RNP APCH - GPS.		MISSED APPROACH: Climb to 4000 direct OHFAH and hold.	
<p>Baro-VNAV and VDP NA when using Ankeny altimeter setting. For uncompensated Baro-VNAV systems, LNAV/VNAV NA below -16°C or above 54°C. Rwy 19 helicopter visibility reduction below <math>\frac{3}{4}</math> SM NA. When local altimeter setting not received, use Ankeny altimeter setting and increase LPV DA to 1239 feet and all visibilities <math>\frac{1}{2}</math> SM. Increase LNAV/VNAV DA to 1434 feet; increase all MDAs 60 feet and LNAV visibility Cat C <math>\frac{1}{4}</math> SM.</p>			
ASOS <b>132.025</b>	DES MOINES APP CON <b>123.9 307.15</b>	CLNC DEL <b>126.0</b>	UNICOM <b>122.7 (CTAF)</b>



ELEV 956	TDZE 937
----------	----------



4000	OHFAH	VGSI and RNAV glidepath not coincident (VGSI Angle 4.00/TCH 41).		4 NM Holding Pattern
*LNAV only.		FEKHO 3 NM to RWY 19	AILEN 2600	FULLE 3000
RWY 19 1920*		1.1 NM to RWY 19	1.9 NM	2.1 NM
		1.1 NM	1.9 NM	2.1 NM
CATEGORY	A	B	C	D
LPV DA	1187-1 250 (300-1)			NA
LNAV/VNAV DA	1382-1 $\frac{3}{8}$ 445 (500-1 $\frac{3}{8}$ )			NA
LNAV MDA	1420-1 483 (500-1)		1420-1 $\frac{3}{8}$ 483 (500-1 $\frac{3}{8}$ )	NA

NC-3, 11 JUN 2026 to 09 JUL 2026

NC-3, 11 JUN 2026 to 09 JUL 2026