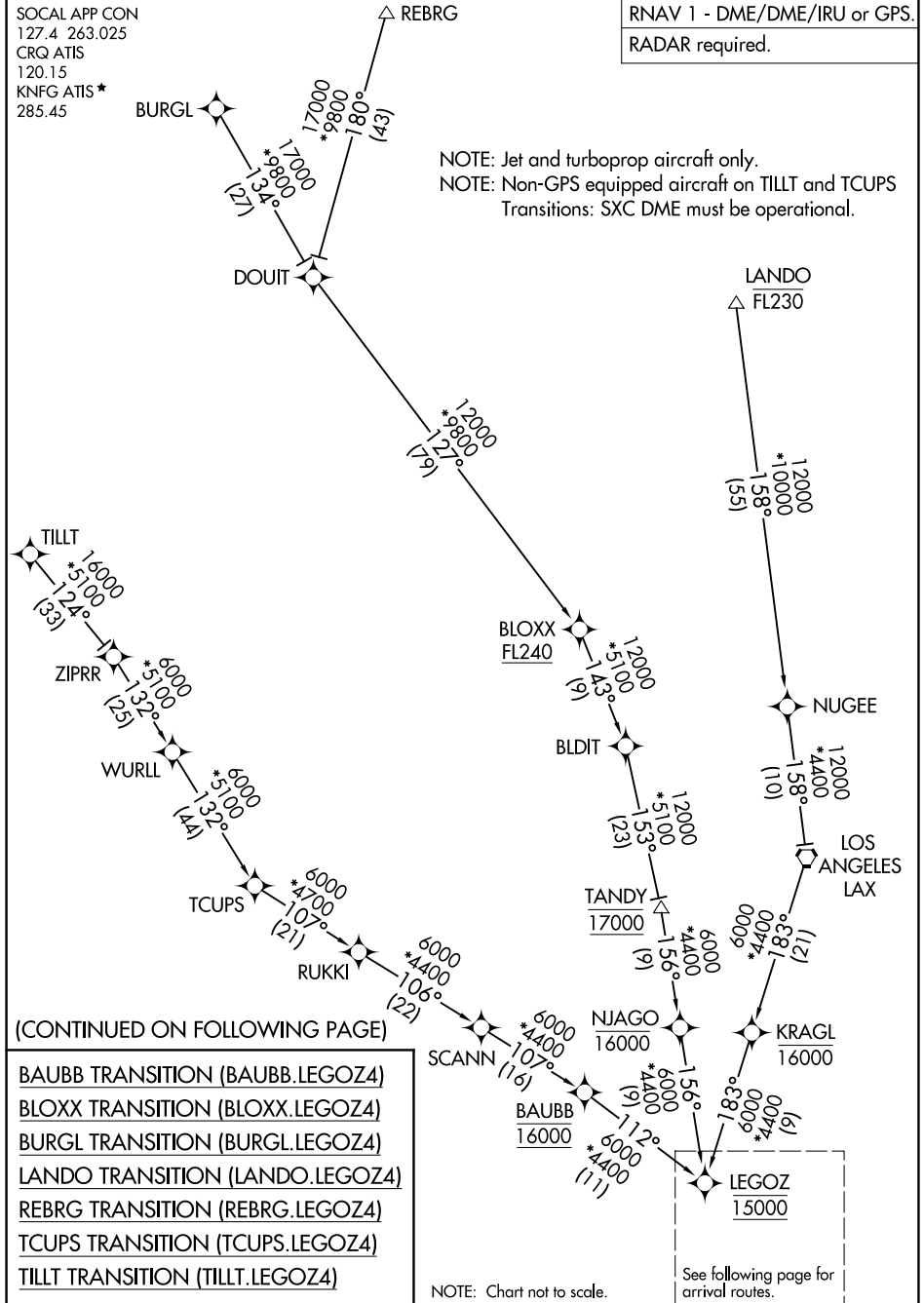


LEGOZ FOUR ARRIVAL (RNAV) Transition Routes

SOCAL APP CON
127.4 263.025
CRQ ATIS
120.15
KNFG ATIS*
285.45

RNAV 1 - DME/DME/IRU or GPS.
RADAR required.

NOTE: Jet and turboprop aircraft only.
NOTE: Non-GPS equipped aircraft on TILLT and TCUPS
Transitions: SXC DME must be operational.



(CONTINUED ON FOLLOWING PAGE)

- BAUBB TRANSITION (BAUBB.LEGOZ4)
- BLOXX TRANSITION (BLOXX.LEGOZ4)
- BURGL TRANSITION (BURGL.LEGOZ4)
- LANDO TRANSITION (LANDO.LEGOZ4)
- REBRG TRANSITION (REBRG.LEGOZ4)
- TCUPS TRANSITION (TCUPS.LEGOZ4)
- TILLT TRANSITION (TILLT.LEGOZ4)

NOTE: Chart not to scale.

See following page for arrival routes.

SW-3, 11 JUN 2026 to 09 JUL 2026

SW-3, 11 JUN 2026 to 09 JUL 2026