

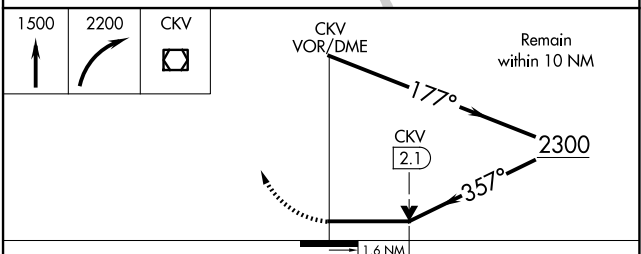
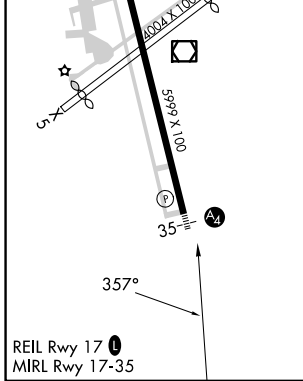
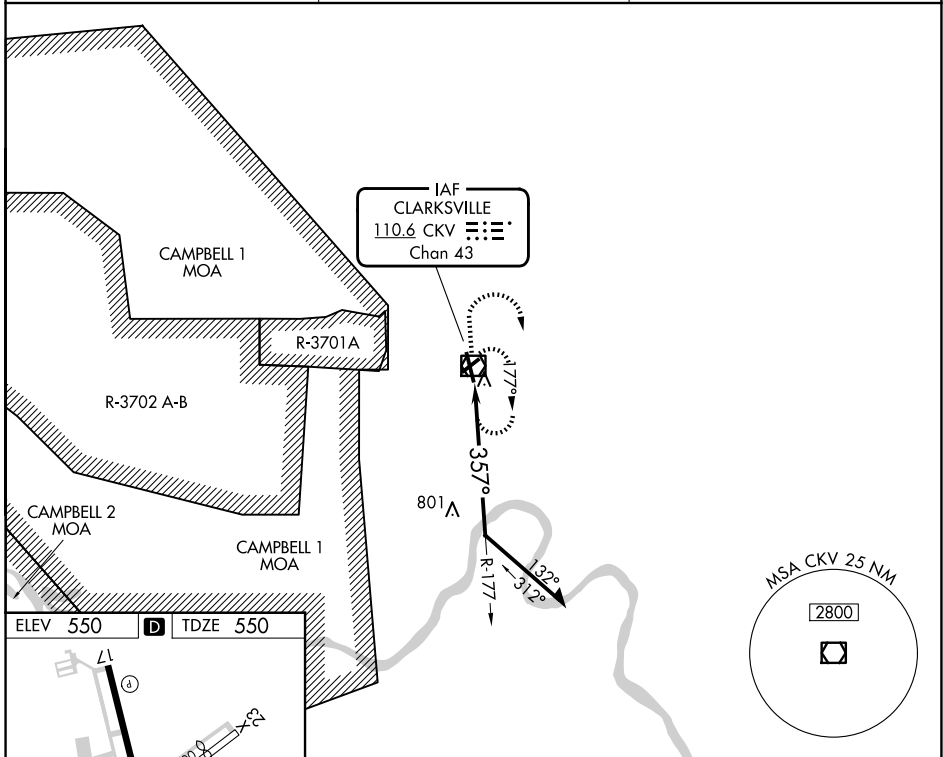
VOR/DME CKV <b>110.6</b> Chan <b>43</b>	APP CRS <b>357°</b>	Rwy Ldg TDZE <b>5999</b> <b>550</b>	Apt Elev <b>550</b>
---	------------------------	---	------------------------

# VOR RWY 35

OUTLAW FLD (CKV)

RADAR required for procedure entry.	MALS A1	MISSED APPROACH: Climb to 1500 then climbing right turn to 2200 direct CKV VOR/DME and hold.
<p>⚠ Circling NA W of Rwy 17-35. Circling Rwy 5, 17, 23 NA at night. Rwy 35 helicopter visibility reduction below 3/4 SM NA. When local altimeter setting not received, use Campbell AAF (Fort Campbell) altimeter setting.</p>		

ASOS <b>134.575</b>	CAMPBELL APP CON <b>134.35 307.025</b>	UNICOM <b>122.8 (CTAF)</b>
------------------------	---	-------------------------------



CATEGORY	A	B	C	D
S-35	1120-1 570 (600-1)		1120-1½ 570 (600-1½)	1120-1¾ 570 (600-1¾)
CIRCLING	1120-1 570 (600-1)		1120-1⅝ 570 (600-1⅝)	1200-2 650 (700-2)

SE-1, 11 JUN 2026 to 09 JUL 2026

SE-1, 11 JUN 2026 to 09 JUL 2026