

WAAS CH <b>82528</b> <b>W20A</b>	APP CRS <b>198°</b>	Rwy Idg TDZE Apt Elev	<b>5000</b> <b>1151</b> <b>1165</b>
--	------------------------	-----------------------------	---

# RNAV (GPS) RWY 20

ATLANTIC MUNI (AIO)

RNP APCH - GPS.

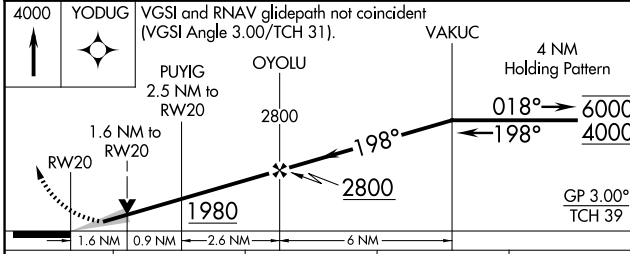
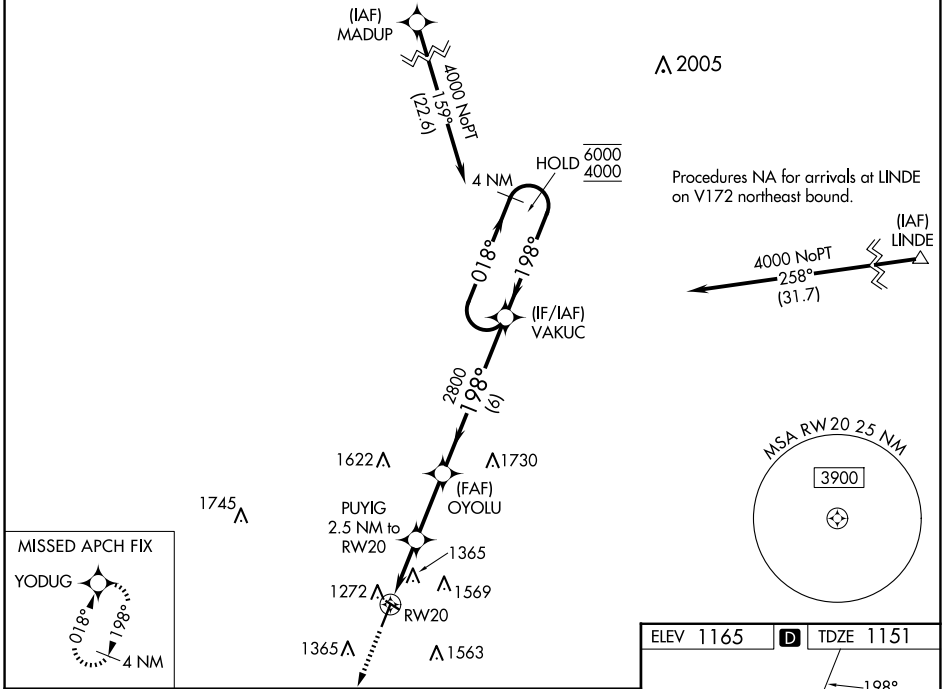
**⚠** Circling Rwy 12, 30 NA at night. For uncompensated Baro-VNAV systems, LNAV/VNAV NA below -17°C or above 54°C.

MISSED APPROACH: Climb to 4000 direct YODUG and hold, continue climb-in-hold to 4000.

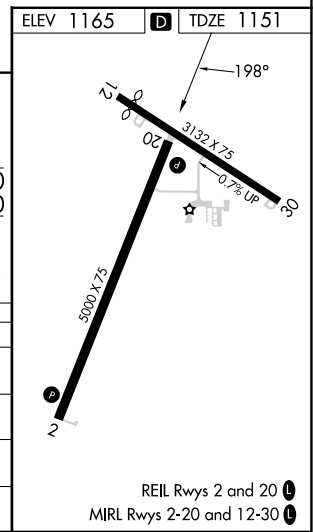
AWOS-3  
**127.825**

MINNEAPOLIS CENTER  
**119.6 290.4**

UNICOM  
**122.7 (CTAF)**



CATEGORY	A	B	C	D
LPV DA	1447-1 296 (300-1)			NA
LNAV/VNAV DA	1733-1¾ 582 (600-1¾)			NA
LNAV MDA	1680-1	529 (600-1)	1680-1½ 529 (600-1½)	NA
CIRCLING	1760-1 595 (600-1)	1920-1 755 (800-1)	1920-2¼ 755 (800-2¼)	NA



REIL Rwy 2 and 20 **Ⓛ**  
MIRL Rwy 2-20 and 12-30 **Ⓛ**

NC-3, 11 JUN 2026 to 09 JUL 2026

NC-3, 11 JUN 2026 to 09 JUL 2026