

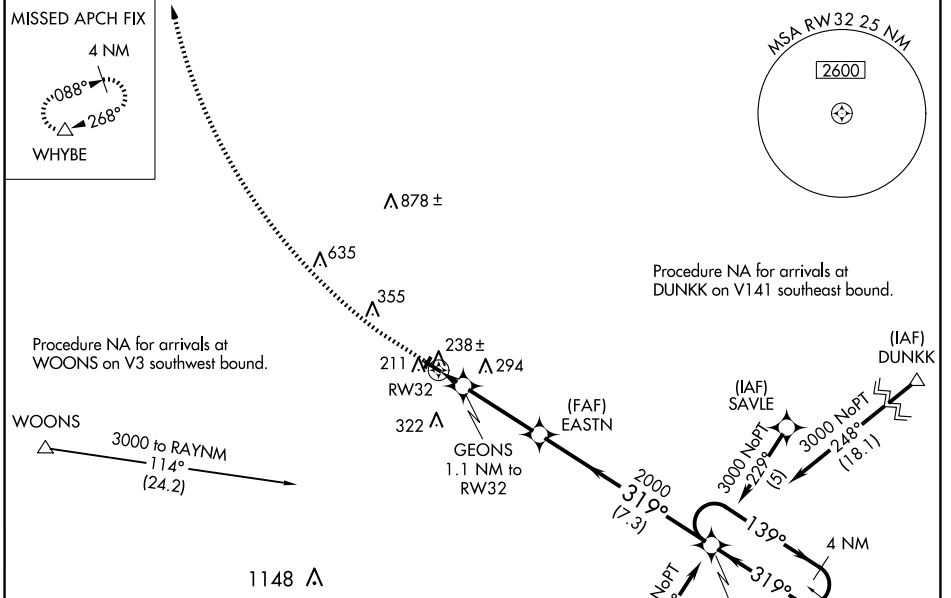
WAAS CH 97644 W32A	APP CRS 319°	Rwy Ldg TDZE Apt Elev	3263 121 123
--	------------------------	-----------------------------	---

RNAV (GPS) RWY 32

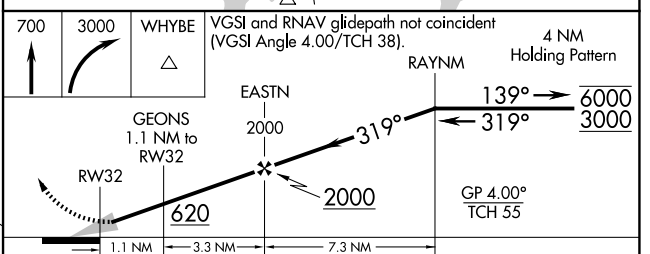
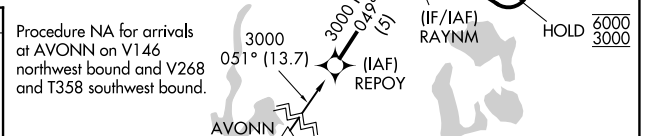
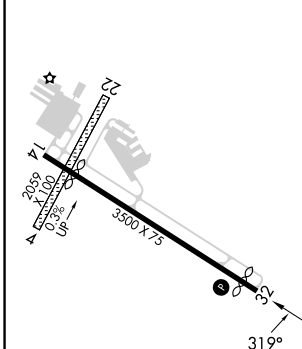
MANSFIELD MUNI (1B9)

RNP APCH - GPS.	MISSED APPROACH: Climb to 700 then climbing right turn to 3000 direct WHYBE and hold.
<p>⚠ Circling NA to Rwy 4 and 22. For uncompensated Baro-VNAV systems, LNAV/VNAV NA below -15°C or above 54°C. Baro-VNAV NA when using OWD altimeter setting. Procedure NA at night. When local altimeter setting not received, use OWD altimeter setting: increase LPV DA to 432 feet, LNAV/VNAV DA to 427 feet, and all MDAs 40 feet.</p>	

AWOS-3PT 118.675	BOSTON APP CON 124.1	UNICOM 123.0 (CTAF) 0
----------------------------	--------------------------------	---------------------------------



ELEV 123	TDZE 121
----------	----------



	A	B	C	D
LPV DA	395-7/8	274 (300-7/8)		NA
LNAV/VNAV DA	390-7/8	269 (300-7/8)		NA
LNAV MDA	500-1	379 (400-1)		NA
C CIRCLING	600-1	477 (500-1)		NA

NE-1, 11 JUN 2026 to 09 JUL 2026

NE-1, 11 JUN 2026 to 09 JUL 2026