

WAAS CH <b>90444</b> <b>W14A</b>	APP CRS <b>139°</b>	Rwy Ldg TDZE Apt Elev	<b>2991</b> <b>121</b> <b>123</b>
--	------------------------	-----------------------------	---

# RNAV (GPS) Z RWY 14

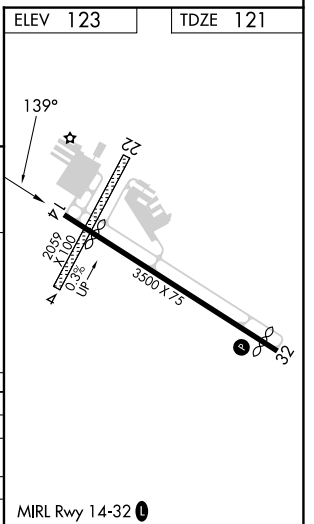
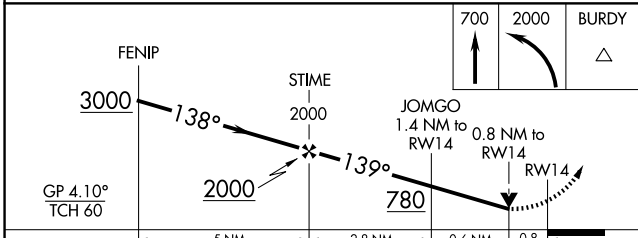
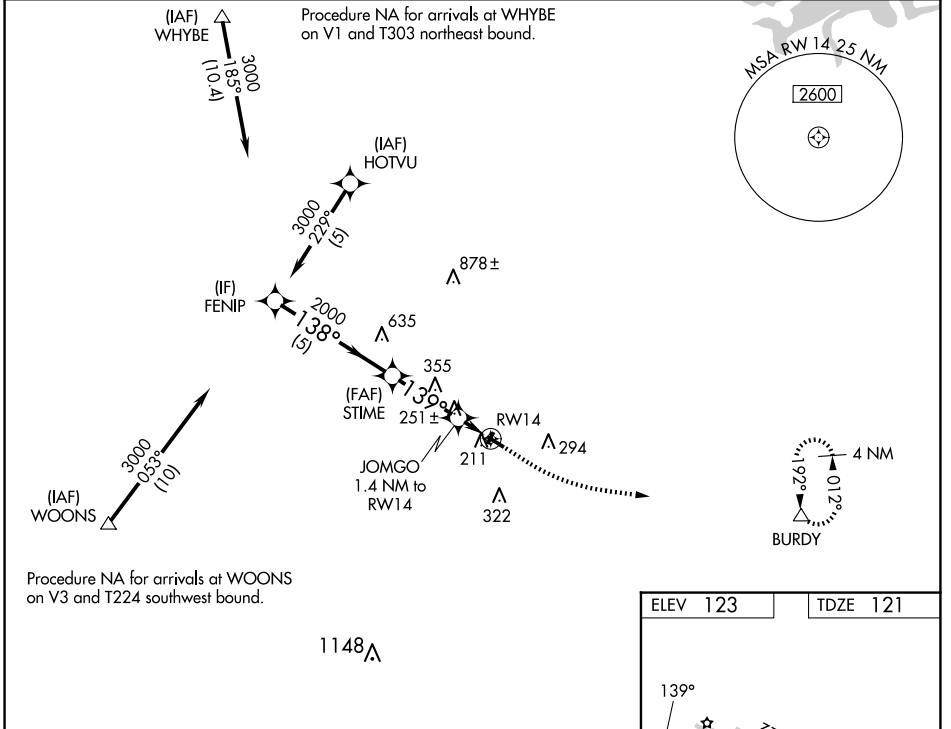
MANSFIELD MUNI (1B9)

**RNP APCH - GPS.**

**⚠** Circling NA to Rwys 4 and 22. Rwy 14 helicopter visibility reduction below  $\frac{3}{4}$  SM NA.  
**⚠** For uncompensated Baro-VNAV systems, LNAV/VNAV NA below  $-15^{\circ}\text{C}$  or above  $54^{\circ}\text{C}$ .  
 Baro-VNAV and VDP NA when using OWD altimeter setting. Procedure NA at night.  
 When local altimeter setting not received, use OWD altimeter setting: increase LPV DA to 553 feet and all visibilities  $\frac{1}{8}$  SM, increase LNAV/VNAV DA to 566 feet and all visibilities  $\frac{1}{4}$  SM, and increase all MDAs 40 feet.

**MISSED APPROACH:**  
 Climb to 700 then climbing left turn to 2000 direct BURDY and hold.

AWOS-3PT <b>118.675</b>	BOSTON APP CON <b>124.1</b>	UNICOM <b>123.0 (CTAF) 0</b>
----------------------------	--------------------------------	---------------------------------



CATEGORY	A	B	C	D
LPV DA	486-1	365 (400-1)		NA
LNAV/VNAV DA	529-1 $\frac{1}{8}$	408 (500-1 $\frac{1}{8}$ )		NA
LNAV MDA	520-1	399 (400-1)		NA
<b>C</b> CIRCLING	600-1	477 (500-1)		NA

NE-1, 11 JUN 2026 to 09 JUL 2026

NE-1, 11 JUN 2026 to 09 JUL 2026