

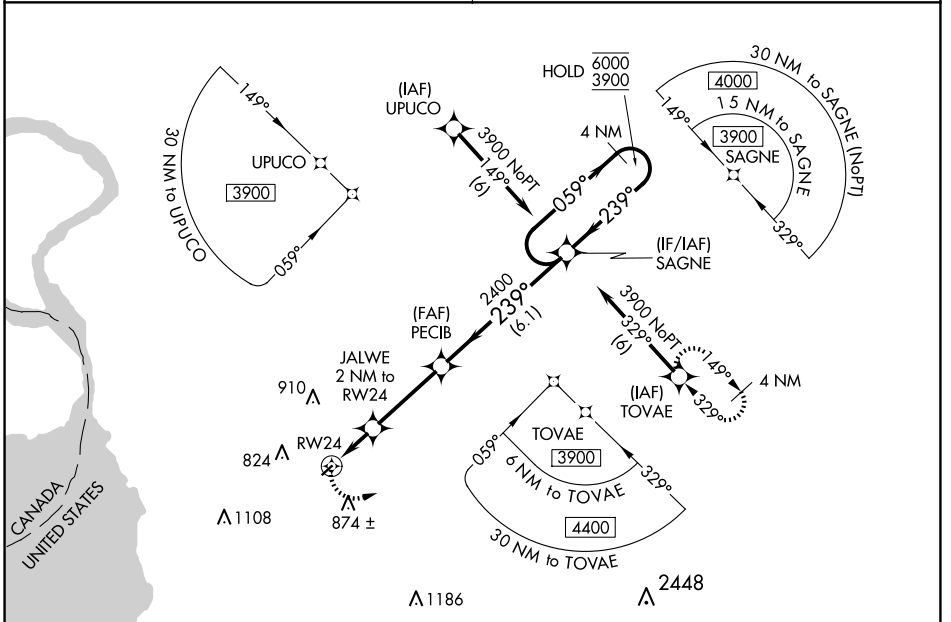
WAAS CH <b>42724</b> <b>W24A</b>	APP CRS <b>239°</b>	Rwy Idg <b>2666</b> TDZE <b>670</b> Apt Elev <b>670</b>
--	------------------------	---

# RNAV (GPS) RWY 24

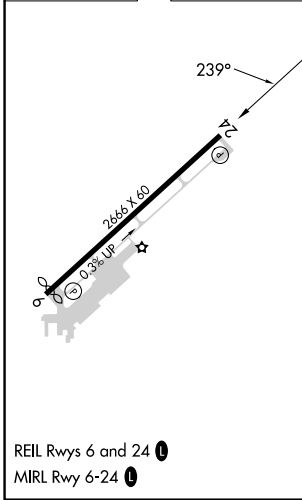
BUFFALO AIRFIELD (9G $\emptyset$ )

RNP APCH.	<p>Procedure NA at night. Rwy 24 helicopter visibility reduction below 1 SM NA.</p> <p>NA Use Buffalo Niagara Intl altimeter setting.</p>	MISSED APPROACH: Climbing left turn to 3900 direct TOVAE and hold.
-----------	---	--

BUFFALO APP CON <b>126.15 263.125</b>	UNICOM <b>122.975 (CTAF)</b>
--	---------------------------------



ELEV 670	TDZE 670
----------	----------



Visual Segment - Obstacles.		4 NM Holding Pattern	
3900	TOVAE	JALWE 2 NM to RWY 24	PECIB
RWY 24		SAGNE	
1340		2400	
2 NM		6.1 NM	
059° → 6000		← 239° 3900	
CATEGORY	A	B	C
LP MDA	1160-1	490 (500-1)	NA
LNAV MDA	1160-1	490 (500-1)	NA

NE-2, 11 JUN 2026 to 09 JUL 2026

NE-2, 11 JUN 2026 to 09 JUL 2026