

WAAS CH 69529 W10A	APP CRS 097°	Rwy Ldg 6483 TDZE 23 Apt Elev 23
--	------------------------	---

RNAV (GPS) RWY 10R

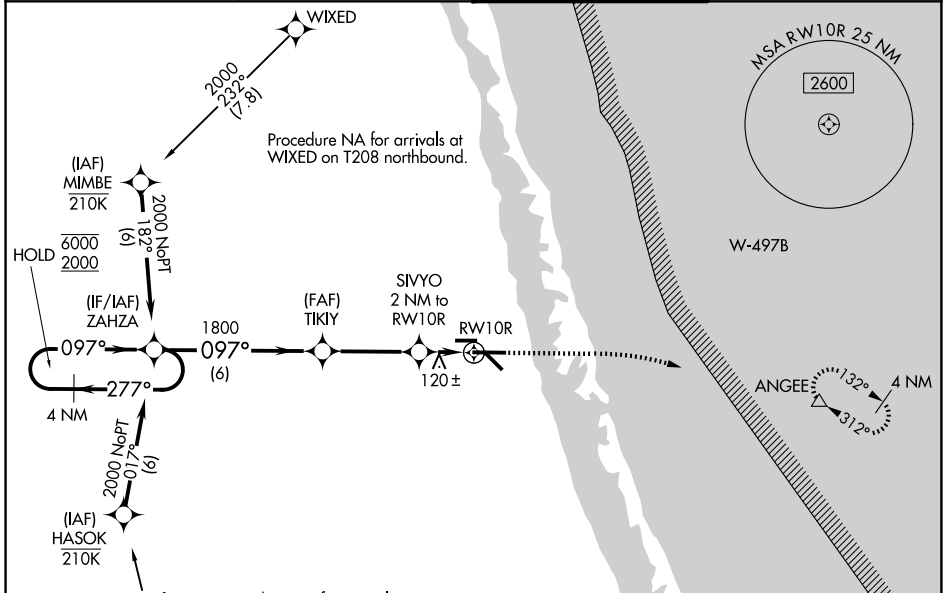
TREASURE COAST INTL (FPR)

RNP APCH-GPS.

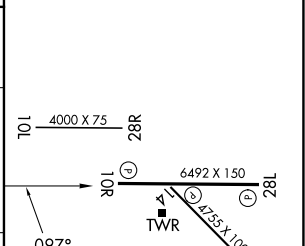
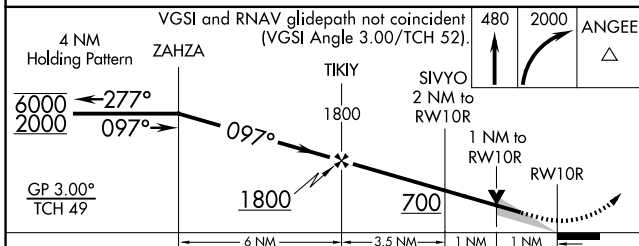
▲ For uncompensated Baro-VNAV systems, procedure NA below 2°C or above 54°C.

MISSED APPROACH: Climb to 480 then climbing right turn to 2000 direct ANGEE and hold.

ATIS 134.825	PALM BEACH APP CON 132.8	FORT PIERCE TOWER ★ 128.2 (CTAF) 0	GND CON (GCO) 119.55
------------------------	------------------------------------	--	--------------------------------



ELEV 23	D TDZE 23
---------	------------------



CATEGORY	A	B	C	D
LPV DA		273-3/4	250 (300-3/4)	
LNNAV/VNAV DA		297-7/8	274 (300-7/8)	
LNNAV MDA		380-1	357 (400-1)	
CIRCLING	460-1 437 (500-1)	480-1 457 (500-1)	880-2 1/2 857 (900-2 1/2)	880-2 3/4 857 (900-2 3/4)

REIL Rwy 10R and 28L **0**
MIRL all Rwy 10R **0**

SE-3, 11 JUN 2026 to 09 JUL 2026

SE-3, 11 JUN 2026 to 09 JUL 2026