

LAMP9 NINE DEPARTURE

GRAY DEP CON
120.075 323.15
AWOS-3PT
128.575
CLNC DEL
121.7
CTAF
122.7

RADAR required.

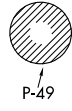
**TOP ALTITUDE:
ASSIGNED BY ATC**

TAKEOFF MINIMUMS
Rwys 1, 19: Standard.

SONET

2700
*2200
091°
(17)

R-271



WACO
115.3 ACT
Chan 100

3000
036°
(42)

R-6302D

R-6302C

R-6302A

R-6302B

GOOCH SPRINGS
112.5 AGJ
Chan 72

R-098

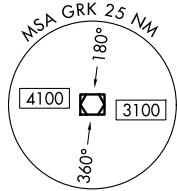
278°

3800
*3200
202°
(65)

R-018

STONEWALL
113.8 STV
Chan 85

GRAY
111.8 GRK
Chan 55



NOTE: WACO Transition for aircraft inbound to terminal area airports.

NOTE: Chart not to scale.

DEPARTURE ROUTE DESCRIPTION

TAKEOFF RUNWAY 1: Climbing right turn heading 300° to intercept and proceed on AGJ R-098. Thence. . . .

TAKEOFF RUNWAY 19: Climbing right turn heading 330° to intercept and proceed on AGJ R-098. Thence. . . .

. . . . on assigned transition. Maintain ATC assigned altitude, expect filed altitude 10 minutes after departure.

STONEWALL TRANSITION (LAMP9.STV): From over AGJ VORTAC on AGJ R-202 and STV R-018 to STV VORTAC.

WACO TRANSITION (LAMP9.ACT): From over AGJ VORTAC on AGJ R-036 to SONET INT, then on ACT R-271 to ACT VORTAC.

LAMP9 NINE DEPARTURE

(LAMP9.AGJ) 14MAY26

KILLEEN, TEXAS
SKYLARK FLD (ILJ)

SC-3, 11 JUN 2026 to 09 JUL 2026

SC-3, 11 JUN 2026 to 09 JUL 2026