

WAAS CH <b>77811</b> <b>W01A</b>	APP CRS <b>010°</b>	Rwy Ldg <b>6502</b> TDZE <b>1133</b> Apt Elev <b>1182</b>
--	------------------------	---

# RNAV (GPS) RWY 1

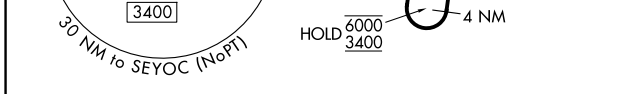
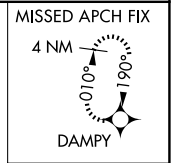
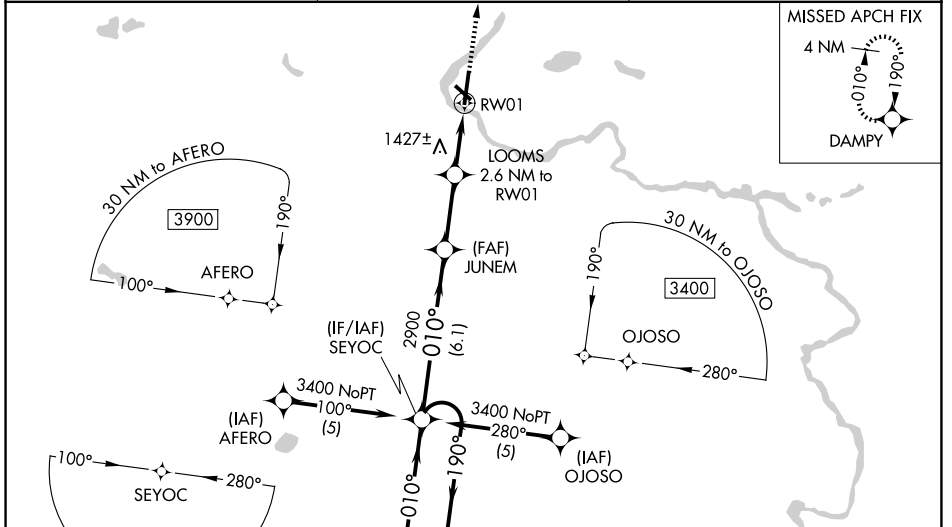
FORD (IMT)

RNP APCH - GPS.

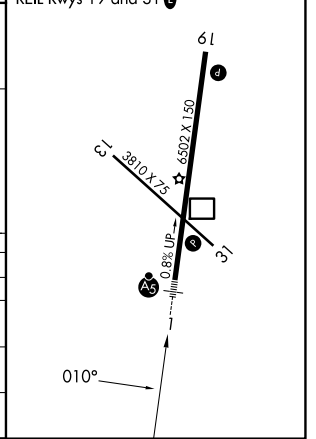
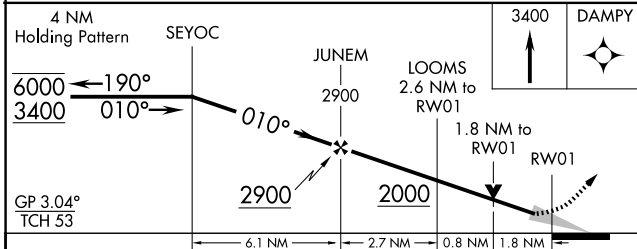
⚠ Circling Rwy 13, 31 NA at night. For uncompensated Baro-VNAV systems, LNAV/VNAV NA below -17°C or above 54°C. Circling NA northeast of Rwy 19 and 31. Baro-VNAV and VDP NA when using ESC altimeter setting. For inop ALS, increase LNAV/VNAV all Cats visibilities to 1 3/4 SM and LNAV Cats C and D visibility to 3/4 SM. When using ESC altimeter setting increase LPV all Cats visibilities to 1 1/4 SM and LNAV Cats C and D visibilities to 2 1/2 SM. When local altimeter setting not received, use ESC altimeter setting and increase LPV DA to 1563 feet and all visibilities 1/4 SM; increase LNAV/VNAV DA to 1940 feet and all visibilities 1/2 SM; increase all MDAs 180 feet and LNAV visibilities Cat B/C/D 1/2 SM, and Circling visibilities Cat B/C/D 3/4 SM.

MALSRL MISSED APPROACH:  
Climb to 3400 direct DAMPY and hold.

ASOS <b>119.025</b>	MINNEAPOLIS CENTER <b>121.25 322.5</b>	UNICOM <b>122.8 (CTAF)</b>
------------------------	---	-------------------------------



ELEV <b>1182</b>	TDZE <b>1133</b>
MIRL Rwy 13-31	HIRL Rwy 1-19
REIL Rwy 19 and 31	



CATEGORY	A	B	C	D
LPV DA		1383-1/2	250 (300-1/2)	
LNAV/VNAV DA		1760-1 3/8	627 (600-1 3/8)	
LNAV MDA	1760-1/2	627 (600-1/2)	1760-1 3/8	627 (600-1 3/8)
CIRCLING	1760-1 578 (600-1)	1780-1 598 (600-1)	1780-1 3/4 598 (600-1 3/4)	1880-2 1/4 698 (700-2 1/4)

EC-1, 11 JUN 2026 to 09 JUL 2026

EC-1, 11 JUN 2026 to 09 JUL 2026