

WAAS CH <b>58247</b> <b>W19A</b>	APP CRS <b>190°</b>	Rwy Ldg <b>6376</b> TDZE <b>1182</b> Apt Elev <b>1182</b>
--	------------------------	---

# RNAV (GPS) RWY 19

FORD (IMT)

RNP APCH - GPS.

**⚠** Circling NA northeast of Rws 19 and 31. Rwy 19 helicopter visibility reduction below 3/4 SM NA.

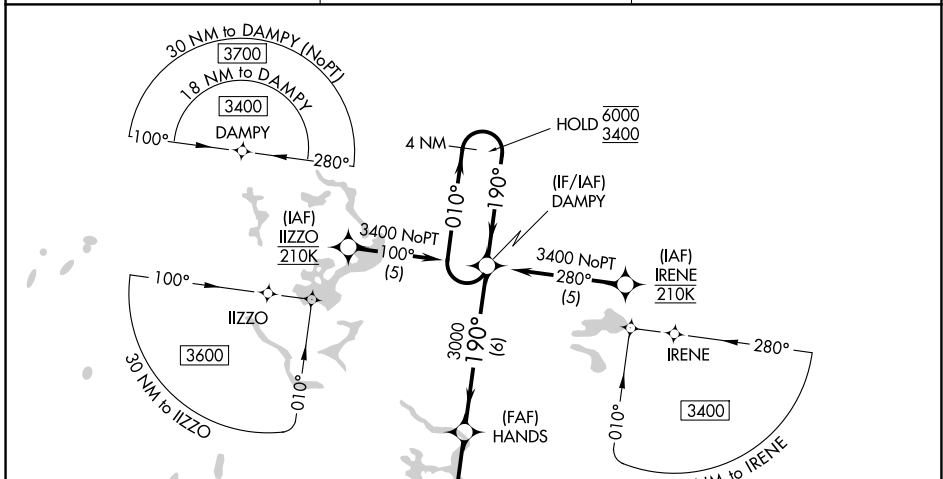
**⚠** Circling Rwy 13, 31 NA at night. Baro-VNAV and VDP NA when using ESC altimeter setting.

For uncompensated Baro-VNAV systems, LNAV/VNAV NA below -22°C or above 54°C.

When local altimeter setting not received, use ESC altimeter setting and increase LPV DA to 1645 feet and all visibilities 3/8 SM; increase LNAV/VNAV DA to 1883 feet and all visibilities 1/2 SM; increase all MDAs 180 feet and LNAV visibility Cat C/D 1/2 SM, and Circling visibility Cat C/D 3/4 SM.

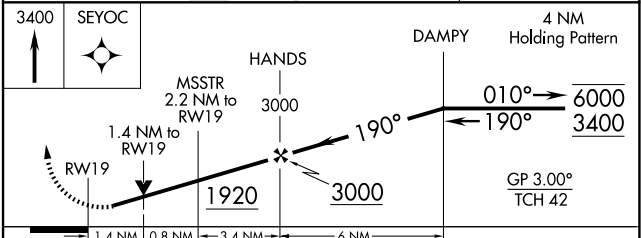
**MISSED APPROACH:**  
Climb to 3400 direct SEYOC and hold.

ASOS <b>119.025</b>	MINNEAPOLIS CENTER <b>121.25 322.5</b>	UNICOM <b>122.8 (CTAF) 0</b>
------------------------	---	---------------------------------



ELEV 1182	<b>D</b>	TDZE 1182
-----------	----------	-----------

6310 X 75  
6502 X 150  
0.8% UP



CATEGORY	A	B	C	D
LPV DA		1465-1	283 (300-1)	
LNAV/VNAV DA		1703-1½	521 (600-1½)	
LNAV MDA	1660-1	478 (500-1)	1660-1¾	478 (500-1¾)
CIRCLING	1660-1 478 (500-1)	1760-1 578 (600-1)	1780-1½ 598 (600-1½)	1880-2¼ 698 (700-2¼)

EC-1, 11 JUN 2026 to 09 JUL 2026

EC-1, 11 JUN 2026 to 09 JUL 2026