

| | | |
|--|------------------------|---|
| WAAS CH 82332 W36A | APP CRS 001° | Rwy Idg 4098 TDZE 572 Apt Elev 573 |
|--|------------------------|---|

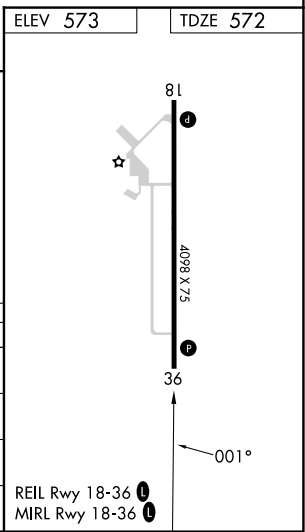
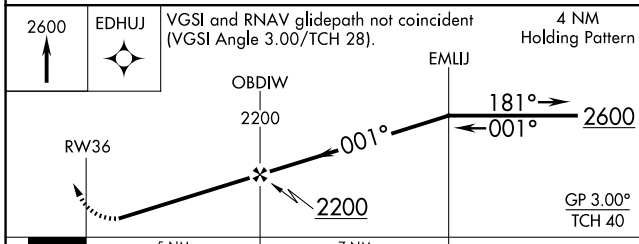
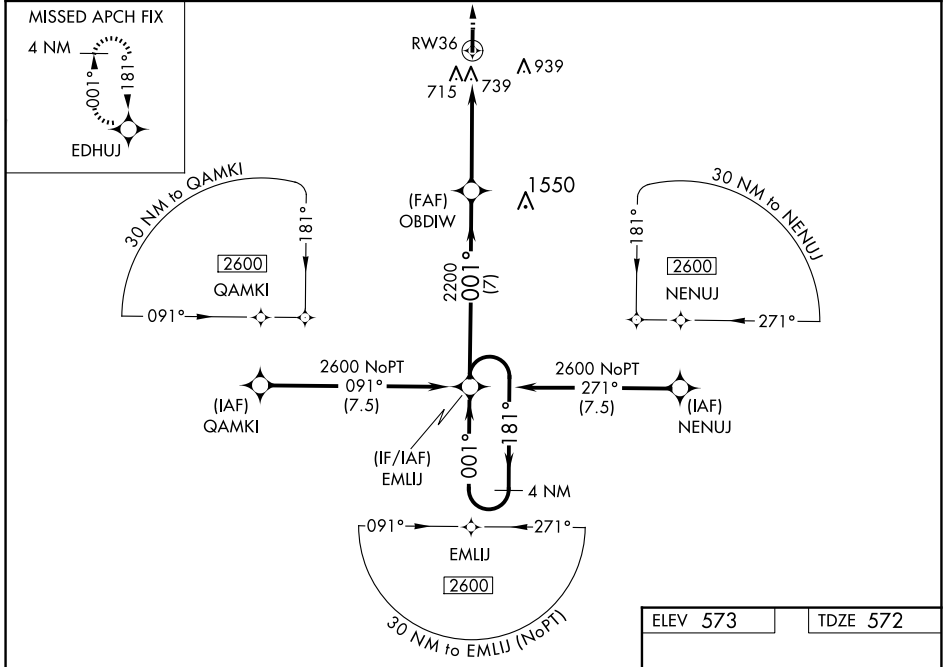
RNAV (GPS) RWY 36

SALEM-LECKRONE (SLO)

⚠ Baro-VNAV NA when using Centralia altimeter setting. For uncompensated Baro-VNAV systems, LNAV/VNAV NA below -21°C (-5°F) or above 54°C (130°F). When local altimeter setting not received, use Centralia altimeter setting: increase LPV DA to 1045 feet and visibility 1/8 SM; increase LNAV/VNAV DA to 1093 feet; increase all MDAs 40 feet and Circling Cats C/D visibility 1/4 SM. Procedure NA at night. DME/DME RNP-0.3 NA. Helicopter visibility reduction below 1 SM NA.

MISSED APPROACH:
Climb to 2600 direct EDHUJ and hold.

| | | |
|----------------------------|--|-----------------------------------|
| AWOS-3PT 118.525 | KANSAS CITY CENTER 127.7 351.825 | UNICOM 122.725 (CTAF) 0 |
|----------------------------|--|-----------------------------------|



| CATEGORY | A | B | C | D |
|--------------|--------|-------------|-------------------------|-------------------------|
| LPV DA | | 1017-1½ | 445 (500-1½) | |
| LNAV/VNAV DA | | 1065-1¾ | 493 (500-1¾) | |
| LNAV MDA | 1040-1 | 468 (500-1) | 1040-1¾ | 468 (500-1¾) |
| CIRCLING | 1040-1 | 467 (500-1) | 1380-2¼ 807 (900-2¼) | 1380-2½ 807 (900-2½) |

EC-3, 11 JUN 2026 to 09 JUL 2026

EC-3, 11 JUN 2026 to 09 JUL 2026