

(AHMET5.KKIDS) 25331

AL-5370 (FAA)

BURKE LAKEFRONT (BKL)  
CLEVELAND, OHIO

# AHMET FIVE DEPARTURE (RNAV)

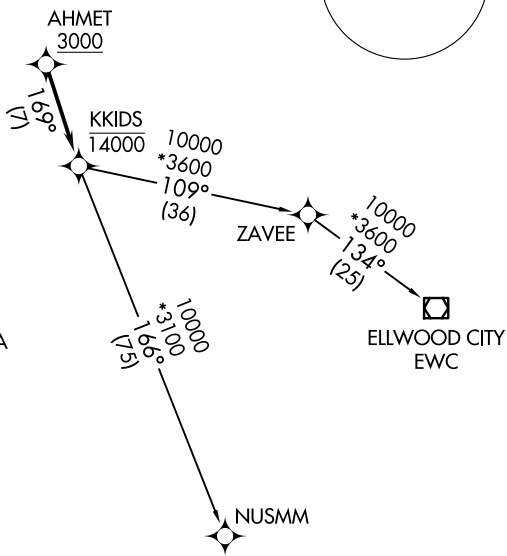
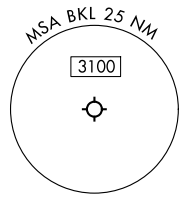
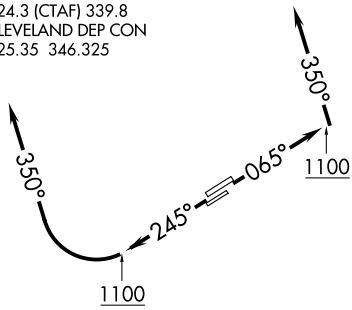
ATIS  
 125.25  
 CLNC DEL  
 339.8  
 121.9 (when tower closed)  
 GND CON  
 121.9 339.8  
 LAKEFRONT TOWER ★  
 124.3 (CTAF) 339.8  
 CLEVELAND DEP CON  
 125.35 346.325

RNAV 1 - DME/DME/IRU or GPS.  
 RADAR required.

**TOP ALTITUDE:  
 ASSIGNED BY ATC**

### TAKEOFF MINIMUMS:

Rwys 6L/R, 24R: Standard with minimum climb of 500' per NM to 1100.  
 Rwy 24L: 400-1<sup>3</sup>/<sub>8</sub> or standard with minimum climb of 757' per NM to 1000.



NOTE: Rwy 6R/24L: Takeoff minimums NA when control tower closed.

NOTE: Chart not to scale.



## DEPARTURE ROUTE DESCRIPTION

**TAKEOFF RUNWAYS 6L/R:** Climb on heading 065° to 1100, then on heading 350° or as assigned by ATC, maintain 2000 (do not climb above 2000) for RADAR vectors to cross AHMET at or above 3000, thence....

**TAKEOFF RUNWAYS 24L/R:** Climb on heading 245° to 1100, then right turn to heading 350° or as assigned by ATC, maintain 2000 (do not climb above 2000) for RADAR vectors to cross AHMET at or above 3000, thence....

....on track 169° to cross KKIDS at or below 14000, then on (transition).  
 Maintain ATC assigned altitude, expect filed altitude ten minutes after departure.

ELLWOOD CITY TRANSITION (AHMET5.EWC)  
 NUSMM TRANSITION (AHMET5.NUSMM)

# AHMET FIVE DEPARTURE (RNAV)

(AHMET5.KKIDS) 27NOV25

CLEVELAND, OHIO  
BURKE LAKEFRONT (BKL)

EC-2, 11 JUN 2026 to 09 JUL 2026

EC-2, 11 JUN 2026 to 09 JUL 2026