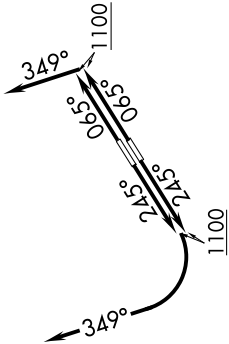


# GTLKE FIVE DEPARTURE (RNAV)

BURKE LAKEFRONT (BKL)

CLEVELAND, OHIO

**TOP ALTITUDE:  
ASSIGNED BY ATC**

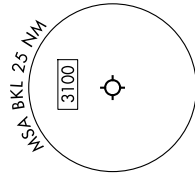


**TAKEOFF MINIMUMS:**

Rwys 6L, 24R: Standard with minimum climb of 500' per NM to 1100.

Rwys 6R: Standard with minimum climb of 500' per NM to 1100. NA when control tower closed.

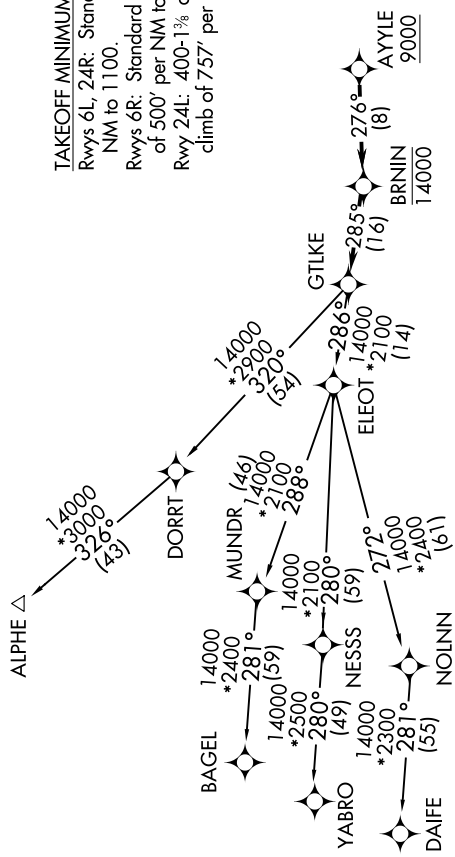
Rwy 24L: 400-1 $\frac{1}{2}$  or standard with minimum climb of 757' per NM to 1000. NA when control tower closed.



RNAV 1 - DME/DME/IRU or GPS.  
RADAR required.

CLEVELAND DEP CON  
125.35 346.325  
ATIS  
125.25  
CINC DEL  
339.8  
121.9 (when hvr closed)  
GND CON  
121.9 339.8  
LAKEFRONT TOWER ★  
124.3 (CTAF) 339.8

NOTE: Rwy 6R/24L: Takeoff minimums NA when control tower closed.



(CONTINUED ON FOLLOWING PAGE)

NOTE: Chart not to scale.

# GTLKE FIVE DEPARTURE (RNAV)

(GTLKE5.GTLKE) 27NOV25

CLEVELAND, OHIO

BURKE LAKEFRONT (BKL)