

# ZAAPA SIX DEPARTURE (RNAV)

EC-2, 11 JUN 2026 to 09 JUL 2026

<p><b>RNAV 1 - DME/DME/IRU or GPS.</b> RADAR required.</p>	<p><b>TOP ALTITUDE: ASSIGNED BY ATC</b></p>
--	---

<p><b>TAKEOFF MINIMUMS:</b> Rwys 6L, 24R: Standard with minimum climb of 500' per NM to 1100. Rwys 6R: Standard with minimum climb of 500' per NM to 1100. NA when control tower closed. Rwy 24L: 400-1<sup>3</sup>/<sub>4</sub> or standard with minimum climb of 757' per NM to 1000. NA when control tower closed.</p>	<p><b>NOTE: PUIJL TRANSITION:</b> For aircraft at or below FL220 only or as assigned by ATC. <b>NOTE: Rwy 6R/24L:</b> Takeoff minimums NA when control tower closed.</p>
---	--

<p>CLEVELAND DEP CON 125.35 346.325 ATIS 125.25 CINIC DEL 339.8 121.9 (when twr closed) GND CON 121.9 339.8 LAKEFRONT TOWER* 124.3 (CTAF) 339.8</p>	<p>MOHUM 9000</p>
---	-----------------------

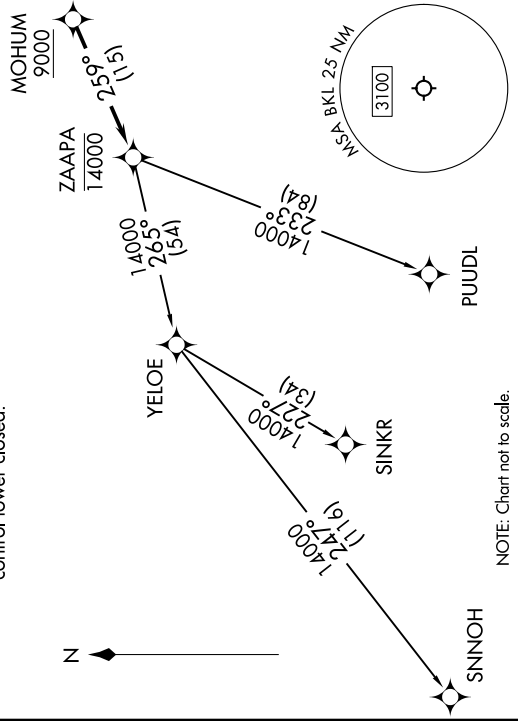
**DEPARTURE ROUTE DESCRIPTION**

**TAKEOFF RUNWAY 6L/R:** Climb on heading 065° to 1100, then on heading 349° or as assigned by ATC, maintain 2000 (do not climb above 2000) for RADAR vectors to cross MOHUM at or above 9000, thence....

**TAKEOFF RUNWAY 24L/R:** Climb on heading 245° to 1100, then right turn heading 349° or as assigned by ATC, maintain 2000 (do not climb above 2000) for RADAR vectors to cross MOHUM at or above 9000, thence....

....on track 259° to cross ZAAPA at or below 14000, then on (transition). Maintain ATC assigned altitude, expect filed altitude ten minutes after departure.

**PUIJL TRANSITION (ZAAPA6.PUIJL)**  
**SINKR TRANSITION (ZAAPA6.SINKR)**  
**SNNOH TRANSITION (ZAAPA6.SNNOH)**



NOTE: Chart not to scale.

EC-2, 11 JUN 2026 to 09 JUL 2026