

WAAS CH 78026 W23A	APP CRS 230°	Rwy Ldg TDZE Apt Elev	5005 3443 3443
--	------------------------	-----------------------------	---

RNAV (GPS) RWY 23

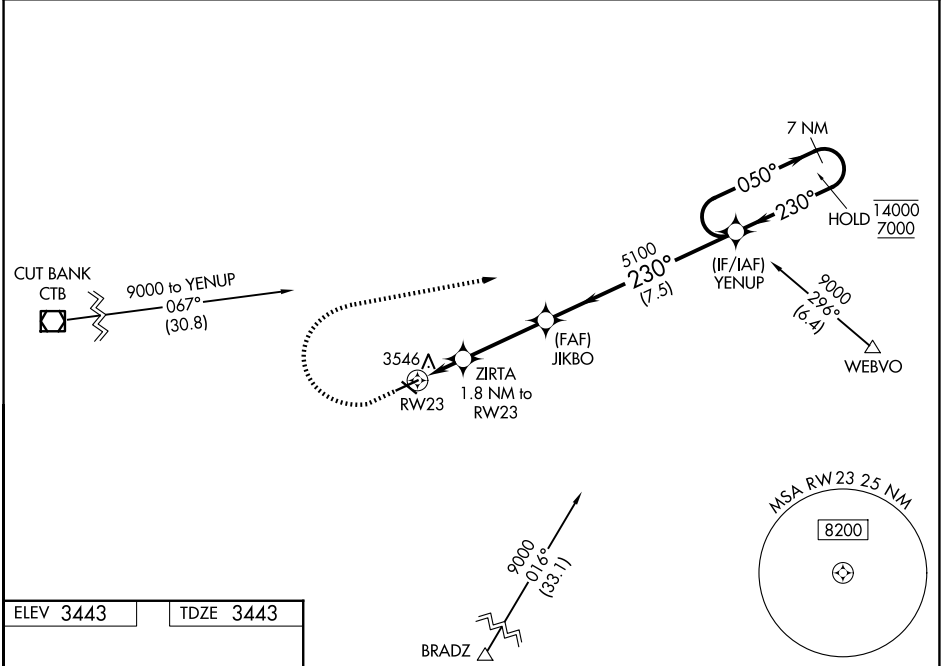
SHELBY (SBX)

RNP APCH - GPS.

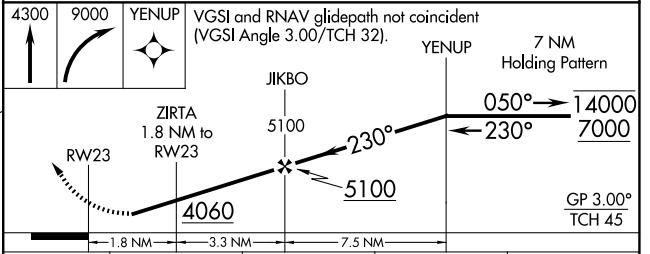
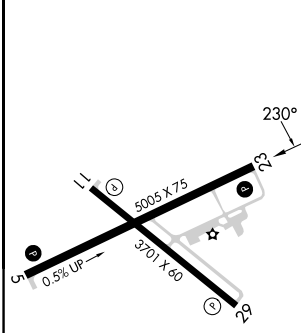
⚠ Rwy 23 helicopter visibility reduction below ¼ SM NA. Baro-VNAV NA when using Cut Bank altimeter setting. For uncompensated Baro-VNAV systems, LNAV/VNAV NA below -21°C or above 54°C. When local altimeter setting not received, use Cut Bank altimeter setting.

MISSED APPROACH: Climb to 4300 then climbing right turn to 9000 direct YENUP and hold, continue climb-in-hold to 9000.

AWOS-3PT 128.325	SALT LAKE CITY CENTER 133.4 285.4	UNICOM 122.8 (CTAF) 0
----------------------------	---	---------------------------------



ELEV 3443	TDZE 3443
-----------	-----------



CATEGORY	A	B	C	D
LPV DA		3799-1	356 (400-1)	
LNAV/VNAV DA		3813-1	370 (400-1)	
LNAV MDA	3920-1	477 (500-1)	3920-1⅓	477 (500-1⅓)
CIRCLING	4020-1 577 (600-1)	4080-1 637 (700-1)	4100-1¾ 657 (700-1¾)	4220-2½ 777 (800-2½)

NW-1, 11 JUN 2026 to 09 JUL 2026

NW-1, 11 JUN 2026 to 09 JUL 2026