

APP CRS	Rwy Ldg	3299
	TDZE	1182
354°	Apt Elev	1183

RNAV (GPS) RWY 35

FERGUS FALLS RGNL (FFM)

RNP APCH-GPS.

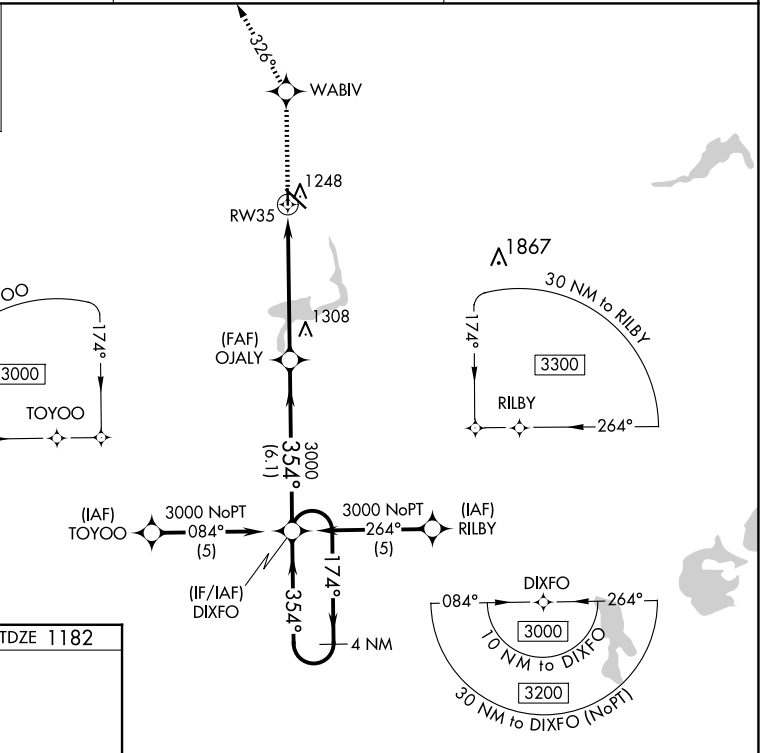
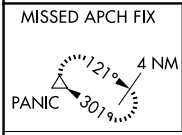
⚠ When local altimeter setting not received, use Elbow Lake altimeter setting and increase all MDAs 60 feet, increase LNAV and Circling Cat C visibility ¼ SM. VDP NA when using Elbow Lake altimeter setting.

MISSED APPROACH: Climb to 3000 direct WABIV and via track 326° to PANIC and hold.

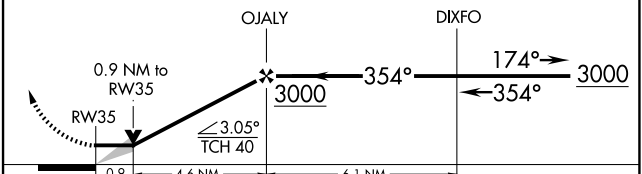
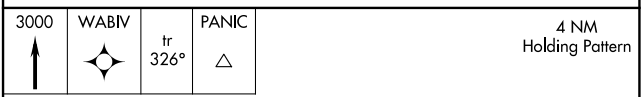
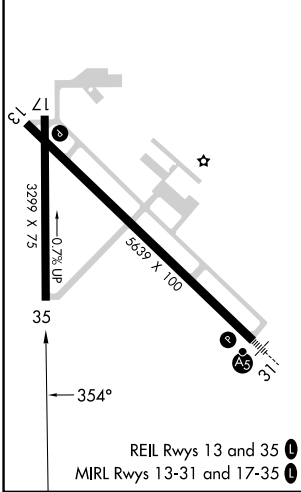
AWOS-3PT
119.05

MINNEAPOLIS CENTER
126.1 269.2

UNICOM
122.8 (CTAF) 0



ELEV 1183 TDZE 1182



CATEGORY	A	B	C	D
LNAV MDA	1560-1 378 (400-1)			NA
CIRCLING	1640-1 457 (500-1)	1740-1 557 (600-1)	1820-1¾ 637 (700-1¾)	NA

NC-1, 11 JUN 2026 to 09 JUL 2026

NC-1, 11 JUN 2026 to 09 JUL 2026