

VOR/DME GGW 113.9 Chan 86	APP CRS 133°	Rwy Idg TDZE Apt Elev	5001 2294 2296
-----------------------------------------------	------------------------	-----------------------------	-------------------------------------------

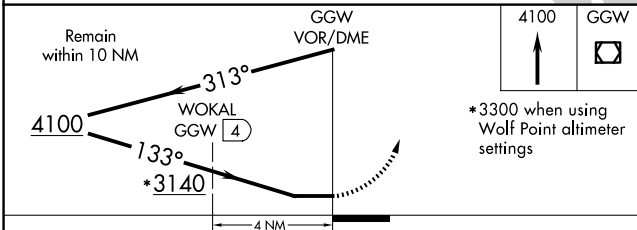
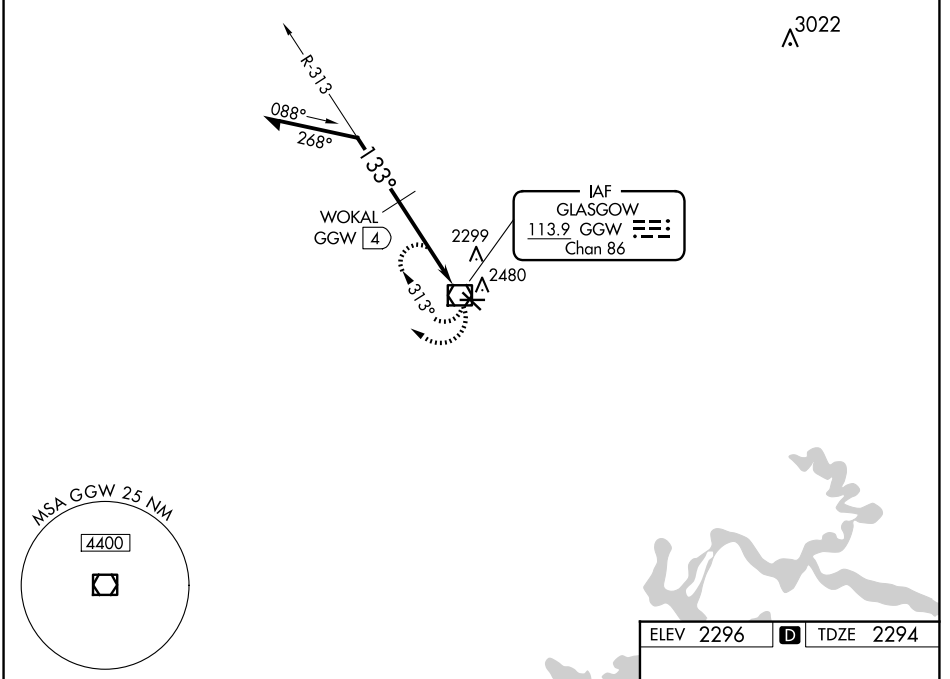
VOR RWY 12

WOKAL FLD/GLASGOW-VALLEY COUNTY (GGW)

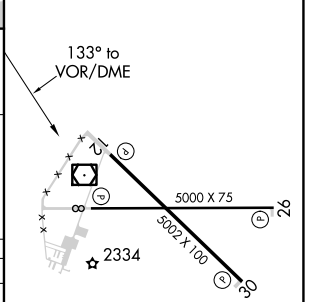
⚠ When local altimeter setting not received, use Wolf Point altimeter setting and increase all MDAs 160 feet and increase S-12 and Circling visibility Cats B/D ¼ SM, Cat C ½ SM and WOKAL fix minimums increase all MDAs 160 feet and increase visibility S-12 Cats C/D ½ SM, and Circling Cat C ¼ SM, Cat D ½ SM.

MISSED APPROACH:
Climb to 4100 in GGW
VOR/DME holding pattern.

ASOS 135.175	SALT LAKE CENTER 126.85 305.2	UNICOM 122.8 (CTAF)
------------------------	-----------------------------------------	-------------------------------



ELEV 2296	D TDZE 2294
-----------	--------------------



CATEGORY	A	B	C	D
S-12	3140-1 846 (900-1)	3140-1¼ 846 (900-1¼)	3140-2½ 846 (900-2½)	3140-2¾ 846 (900-2¾)
CIRCLING	3140-1¼ 844 (900-1¼)	844 (900-1¼)	3140-2½ 844 (900-2½)	3140-2¾ 844 (900-2¾)
WOKAL FIX MINIMUMS				
S-12	2700-1 406 (500-1)	406 (500-1)	2700-1¼ 406 (500-1¼)	406 (500-1¼)
CIRCLING	2780-1 484 (500-1)	484 (500-1)	2780-1½ 484 (500-1½)	2900-2 604 (700-2)

REIL Rwy 8, 12, 26 and 30 **⓪**
MIRL Rwy 8-26 and 12-30 **⓪**

VOR RWY 12

NW-1, 11 JUN 2026 to 09 JUL 2026

NW-1, 11 JUN 2026 to 09 JUL 2026