

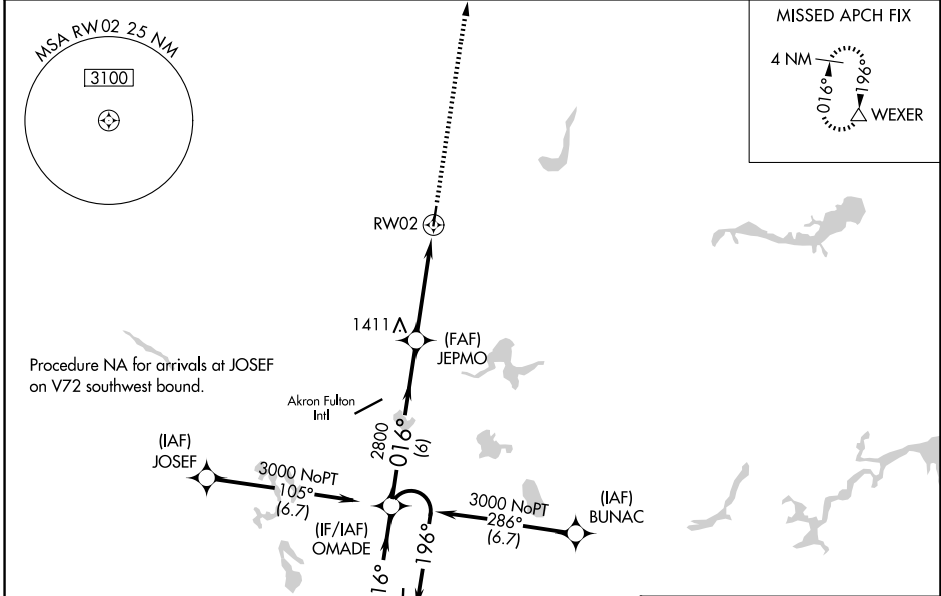
WAAS CH 61001 W02A	APP CRS 016°	Rwy Ldg 3947 TDZE 1129 Apt Elev 1135
--	------------------------	---

RNAV (GPS) RWY 2

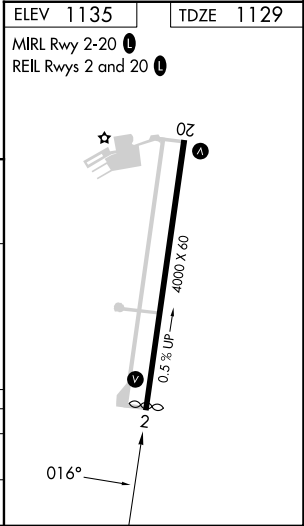
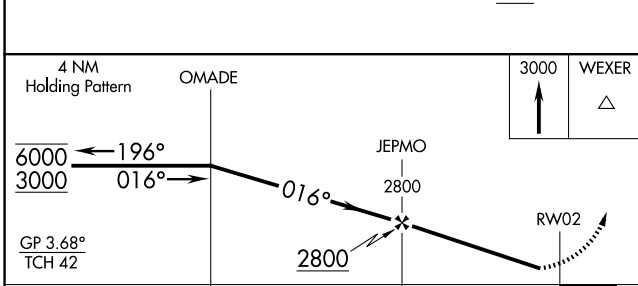
KENT STATE UNIVERSITY (1G3)

RNP APCH - GPS.		MISSED APPROACH: Climb to 3000 direct WEXER and hold.
<p>▼ Rwy 2 helicopter visibility reduction below 1 SM NA. Procedure NA at night.</p> <p>▲ NA When local altimeter setting not received, use AKR altimeter setting and increase LPV DA to 1529 and all visibilities ½ SM, increase all MDAs 40 feet and increase LNAV Cat C visibility ½ SM.</p>		

AWOS-2 119.15	CLEVELAND APP CON ★ 125.5 371.875	CLNC DEL 125.65	UNICOM 122.725 (CTAF)	122.9 0
-------------------------	---	---------------------------	---------------------------------	-----------------------



ELEV 1135	TDZE 1129
MIRL Rwy 2-20 0	REIL Rws 2 and 20 0



CATEGORY	A	B	C	D
LPV DA	1499-1 370 (400-1)			NA
LNAV MDA	1760-1	631 (700-1)	1760-1¾ 631 (700-1¾)	NA

EC-2, 11 JUN 2026 to 09 JUL 2026

EC-2, 11 JUN 2026 to 09 JUL 2026