

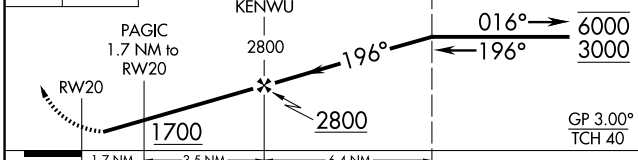
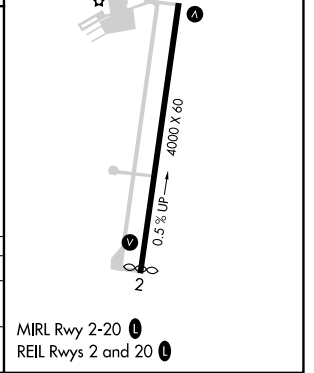
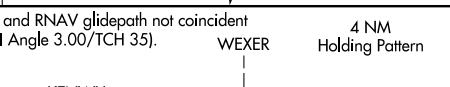
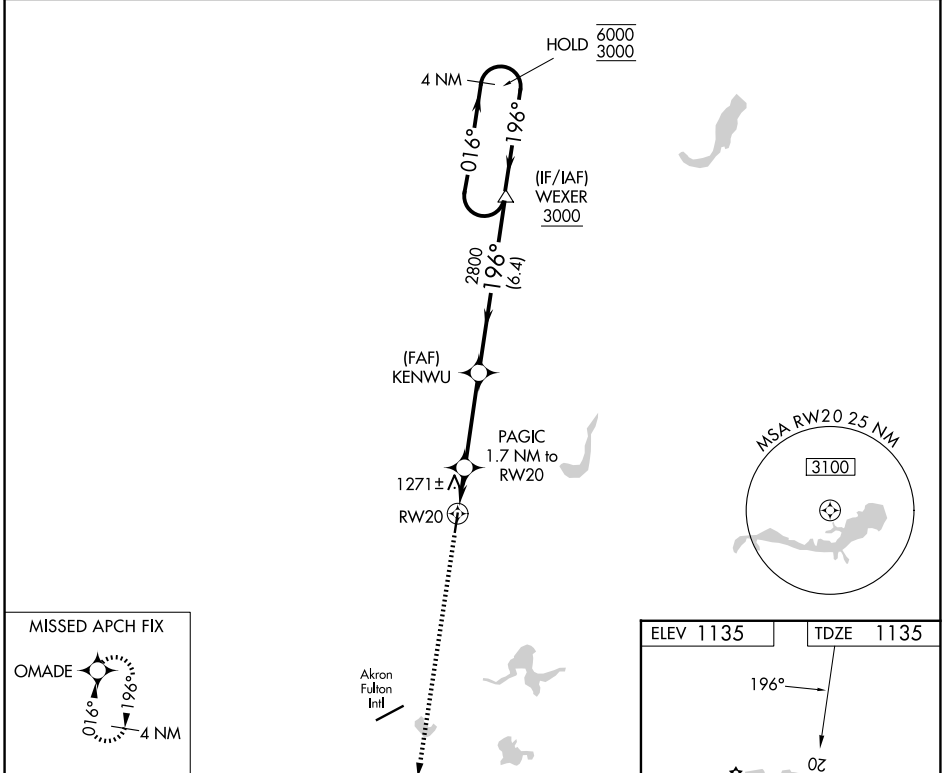
WAAS CH <b>65701</b> <b>W20A</b>	APP CRS <b>196°</b>	Rwy Ldg TDZE <b>1135</b> Apt Elev <b>1135</b>
--	------------------------	---

# RNAV (GPS) RWY 20

KENT STATE UNIVERSITY (1G3)

RNP APCH - GPS.		<p>▼ <b>NA</b> Rwy 20 helicopter visibility reduction below 3/4 SM NA. When local altimeter setting not received, use AKR altimeter setting and increase LPV DA to 1473 feet and all visibilities 1/8 SM. Increase all MDAs 40 feet.</p>		<p>MISSED APPROACH: Climb to 3000 direct OMADE and hold.</p>	
-----------------	--	--	--	--	--

AWOS-2 <b>119.15</b>	CLEVELAND APP CON ★ <b>125.5 371.875</b>	CLNC DEL <b>125.65</b>	UNICOM <b>122.725</b> (CTAF)	<b>122.9</b>
-------------------------	---	---------------------------	---------------------------------	--------------



CATEGORY	A	B	C	D
LPV DA	1443-7/8		308 (400-7/8)	NA
LNAV MDA	1580-1 445 (500-1)		1580-1 3/8 445 (500-1 3/8)	NA

EC-2, 11 JUN 2026 to 09 JUL 2026

EC-2, 11 JUN 2026 to 09 JUL 2026