

VOR/DME ACO 114.4 Chan 91	APP CRS 289°	Rwy Ldg TDZE Apt Elev 1135	N/A N/A 1135
---	------------------------	---	---

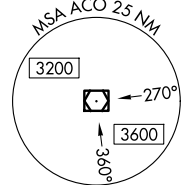
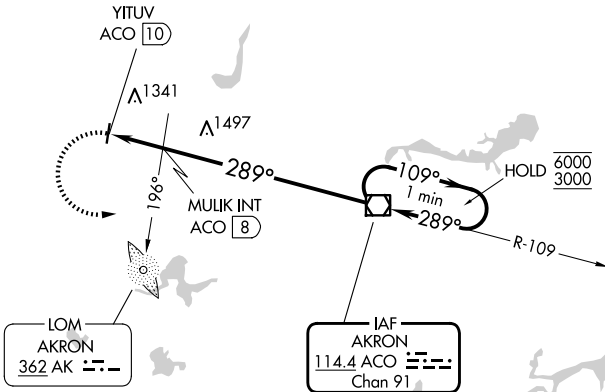
VOR-A

KENT STATE UNIVERSITY (1G3)

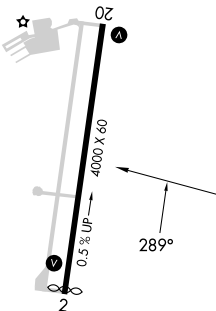
⚠ Circling Rwy 2 NA at night. When local altimeter setting not received, use AKR altimeter setting and increase all MDAs 40 feet.

MISSED APPROACH: Climbing left turn to 3000 direct ACO VOR/DME and hold.

AWOS-2 119.15	CLEVELAND APP CON ★ 125.5 371.875	CLNC DEL 125.65	UNICOM 122.725 (CTAF)	122.9 0
-------------------------	---	---------------------------	---------------------------------	-----------------------



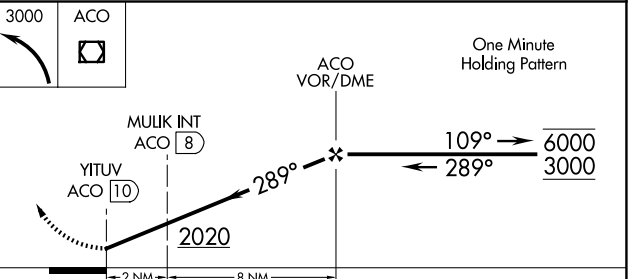
ELEV 1135



MIRL Rwy 2-20 **0**
REIL Rwys 2 and 20 **0**

FAF to MAP 10 NM

Knots	60	90	120	150	180
Min:Sec	10:00	6:40	5:00	4:00	3:20



CATEGORY	A	B	C	D
CIRCLING	2020-1¼	885 (900-1¼)	2020-2¾ 885 (900-2¾)	NA
MULIK FIX MINIMUMS (ADF OR DME REQUIRED)				
CIRCLING	1760-1	625 (700-1)	1760-1¾ 625 (700-1¾)	NA

VOR-A

EC-2, 11 JUN 2026 to 09 JUL 2026

EC-2, 11 JUN 2026 to 09 JUL 2026