

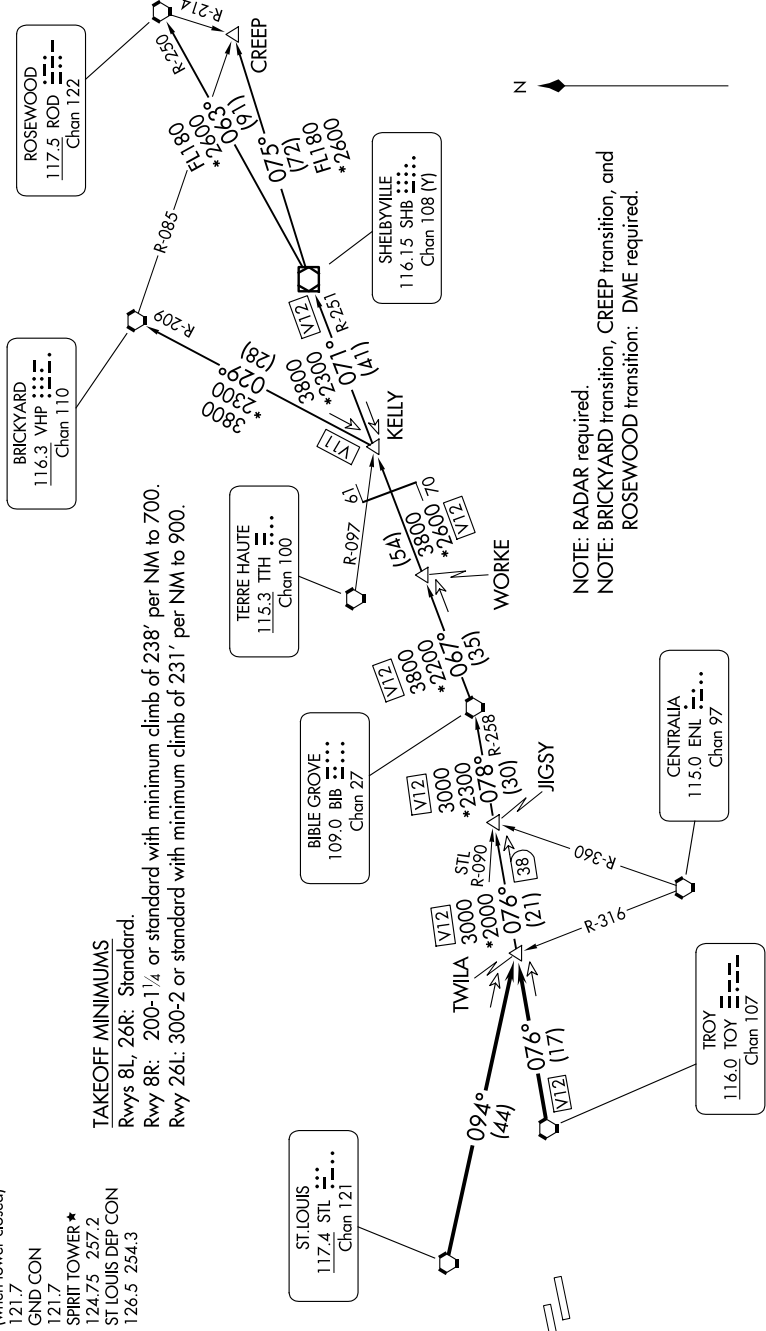
NC-3, 11 JUN 2026 to 09 JUL 2026

- ATIS 134.8
- CINC DEL 133.1
- ST LOUIS CINC DEL (when tower closed) 121.7
- GND CON 121.7
- SPRIT TOWER * 124.75 257.2
- ST LOUIS DEP CON 126.5 254.3

TAKEOFF MINIMUMS

Rwys 8L, 26R: Standard.
 Rwy 8R: 200-1/4 or standard with minimum climb of 238' per NM to 700.
 Rwy 26L: 300-2 or standard with minimum climb of 231' per NM to 900.

TOP ALTITUDE:
 (JETS) 3000/
 (PROPS) 2500



NOTE: RADAR required.
 NOTE: BRICKYARD transition, CREEP transition, and ROSEWOOD transition: DME required.

(CONTINUED ON FOLLOWING PAGE)

NOTE: Chart not to scale.

NC-3, 11 JUN 2026 to 09 JUL 2026