

(JHAUN.JHAUN1) 16259

# JHAUN ONE ARRIVAL (RNAV)

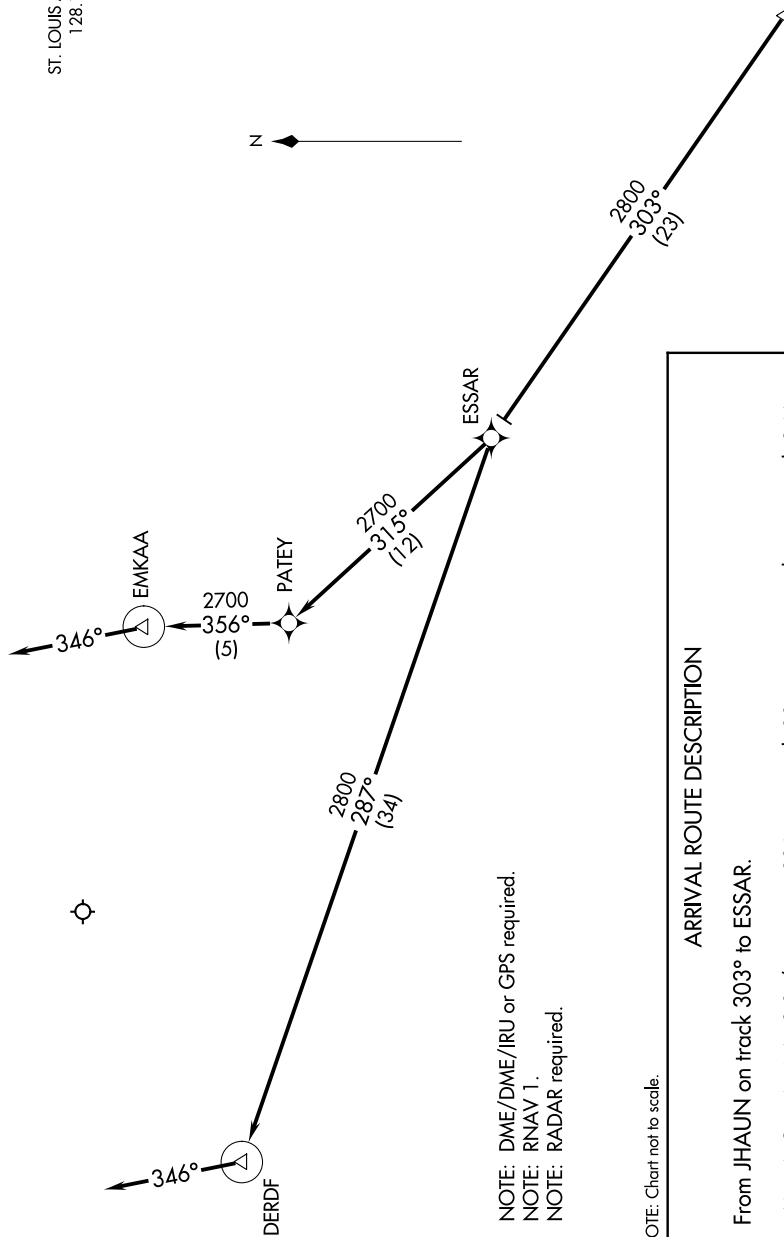
AL-5400 (FAA)

SPIRIT OF ST LOUIS (STUS)  
ST. LOUIS, MISSOURI

ATIS  
134.8  
ST. LOUIS APP CON  
128.1 307.05



JHAUN  
VERTICAL NAVIGATION  
PLANNING INFORMATION  
Expect 12000



NOTE: DME/DME/IRU or GPS required.  
NOTE: RNAV 1.  
NOTE: RADAR required.

NOTE: Chart not to scale.

### ARRIVAL ROUTE DESCRIPTION

From JHAUN on track 303° to ESSAR.

LANDING RUNWAYS 8L/R: From ESSAR on track 287° to DERDF, then on track 346°, expect RADAR vectors prior to DERDF.

LANDING RUNWAYS 26L/R: From ESSAR on track 315° to PATEY, then on track 356° to EMKAA, then on track 346°, expect RADAR vector prior to EMKAA.

NC-3, 11 JUN 2026 to 09 JUL 2026

# JHAUN ONE ARRIVAL (RNAV)

(JHAUN.JHAUN1) 15NOV12

ST. LOUIS, MISSOURI  
SPIRIT OF ST LOUIS (STUS)

9Z0Z JNF 60 of 6Z0Z0Z0Z0Z0Z 14 '8-C-0C