

WAAS CH <b>72904</b> <b>W35A</b>	APP CRS <b>348°</b>	Rwy Ldg TDZE <b>17</b> Apt Elev <b>17</b>	<b>6501</b>
--	------------------------	---	-------------

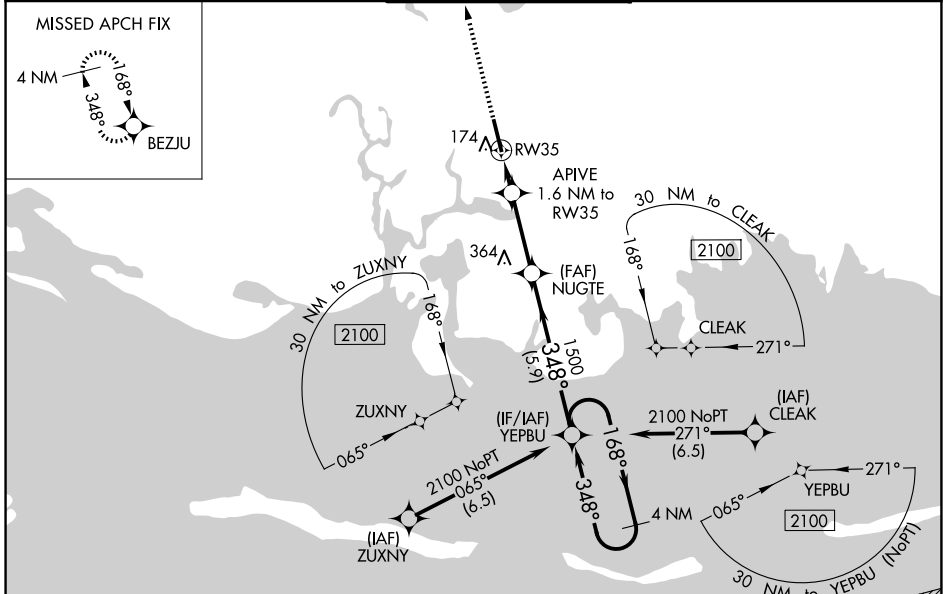
# RNAV (GPS) RWY 35

TRENT LOTT INTL (PQL)

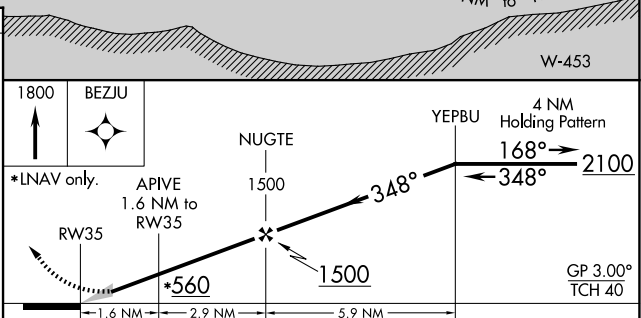
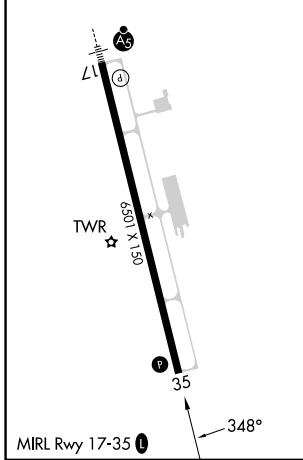
Baro-VNAV NA when using Mobile Rgnl altimeter setting. For uncompensated Baro-VNAV systems, LNAV/VNAV NA below -5°C (23°F) or above 54°C (130°F). DME/DME RNP-0.3 NA. When local altimeter setting not received, use Mobile Rgnl altimeter setting and increase LPV DA to 342 feet, LNAV/VNAV DA to 422 feet, and all MDA 80 feet; increase LPV and LNAV/VNAV visibility ¼ mile all Cts. Increase LNAV visibility Cts C/D ½ mile and Circling visibility Cts C/D ½ mile.

MISSED APPROACH: Climb to 1800 direct BEZJU and hold.

ATIS <b>135.175</b>	MOBILE APP CON* <b>121.0 307.1</b>	TRENT LOTT TOWER* <b>118.575</b> (CTAF) <b>0</b>	GND CON <b>121.725</b>	UNICOM <b>122.8</b>
------------------------	---------------------------------------	---	---------------------------	------------------------



ELEV 17	TDZE 17
---------	---------



CATEGORY	A	B	C	D
LPV DA		267-7/8	250 (300-7/8)	
LNAV/VNAV DA		347-1/8	330 (400-1/8)	
LNAV MDA	440-1	423 (500-1)	440-1 1/4	423 (500-1 1/4)
CIRCLING	480-1 463 (500-1)	680-1 663 (700-1)	680-1 3/4 663 (700-1 3/4)	680-2 663 (700-2)

SC-4, 11 JUN 2026 to 09 JUL 2026

SC-4, 11 JUN 2026 to 09 JUL 2026