

(EDGGE1.EDGGE) 26134

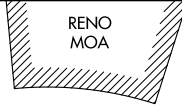
EDGE ONE DEPARTURE (RNAV)

AL-5416 (FAA)

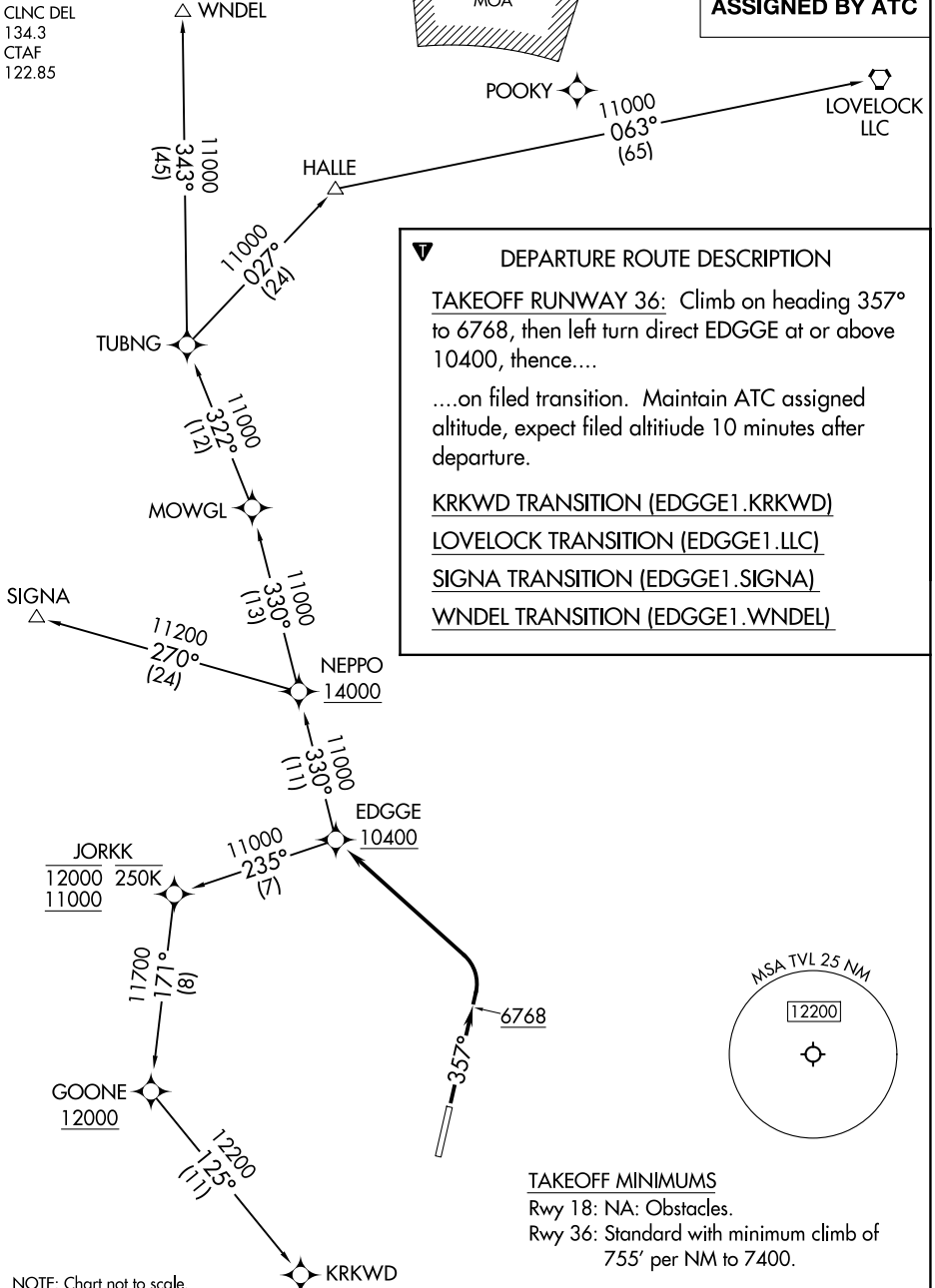
LAKE TAHOE (TVL)
SOUTH LAKE TAHOE, CALIFORNIA

OAKLAND CENTER
127.95 316.1
CLNC DEL
134.3
CTAF
122.85

RNAV 1 - GPS.



**TOP ALTITUDE:
ASSIGNED BY ATC**



DEPARTURE ROUTE DESCRIPTION

TAKEOFF RUNWAY 36: Climb on heading 357° to 6768, then left turn direct EDGGE at or above 10400, thence....

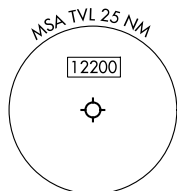
....on filed transition. Maintain ATC assigned altitude, expect filed altitude 10 minutes after departure.

KRKWD TRANSITION (EDGGE1.KRKWD)

LOVELOCK TRANSITION (EDGGE1.LLC)

SIGNA TRANSITION (EDGGE1.SIGNA)

WNDEL TRANSITION (EDGGE1.WNDEL)



TAKEOFF MINIMUMS
 Rwy 18: NA: Obstacles.
 Rwy 36: Standard with minimum climb of 755' per NM to 7400.

NOTE: Chart not to scale.

SW-2, 11 JUN 2026 to 09 JUL 2026

SW-2, 11 JUN 2026 to 09 JUL 2026

EDGE ONE DEPARTURE (RNAV)

(EDGGE1.EDGGE) 14MAY26

SOUTH LAKE TAHOE, CALIFORNIA
LAKE TAHOE (TVL)