

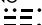
RICHY SEVEN DEPARTURE

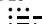
AL-5416 (FAA)

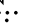
LAKE TAHOE (TVL)
SOUTH LAKE TAHOE, CALIFORNIA

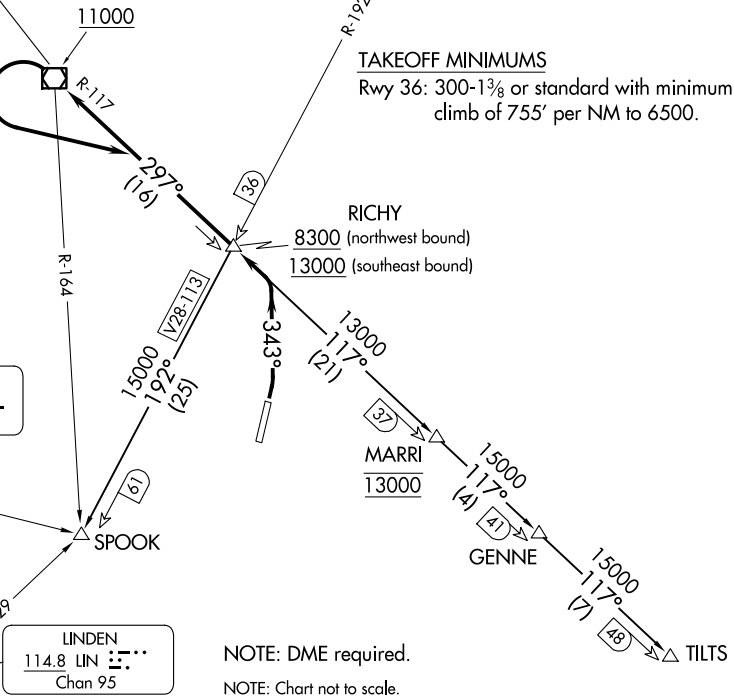
**TOP ALTITUDE:
ASSIGNED BY ATC**

CLNC DEL 134.3
OAKLAND CENTER 127.95 316.1
CTAF 122.85

MUSTANG
117.9 FMG 
Chan 126

PALISADES
113.2 SWR 
Chan 79

HANGTOWN
115.5 HW 
Chan 102



TAKEOFF MINIMUMS
Rwy 36: 300-1 $\frac{3}{8}$ or standard with minimum climb of 755' per NM to 6500.

NOTE: DME required.
NOTE: Chart not to scale.

DEPARTURE ROUTE DESCRIPTION

- TAKEOFF RUNWAY 36:** Climbing left turn on heading 343° to intercept the SWR VOR/DME R-117 northwest bound. Cross RICHY/SWR 16 DME at or above 8300, cross SWR at or above 11000. Thence. . . .
. . . .on assigned route (Aircraft cleared on a transition turn left to intercept the SWR R-117 southeast bound to cross RICHY at or above 13000). Maintain ATC assigned altitude.
- GENNE TRANSITION (RICHY7.GENNE):** From over RICHY INT on SWR R-117 to GENNE.
- MARRI TRANSITION (RICHY7.MARRI):** From over RICHY INT on SWR R-117 to MARRI.
- SPOOK TRANSITION (RICHY7.SPOOK):** From over RICHY INT on FMG R-192 to SPOOK INT.
- TILTS TRANSITION (RICHY7.TILTS):** From over RICHY INT on SWR R-117 to TILTS.

RICHY SEVEN DEPARTURE

SW-2, 11 JUN 2026 to 09 JUL 2026

SW-2, 11 JUN 2026 to 09 JUL 2026