

WAAS CH 86413 W07A	APP CRS 070°	Rwy Ldg TDZE 1307 Apt Elev 1307
--	------------------------	---

RNAV (GPS) RWY 7

WEXFORD COUNTY (CAD)

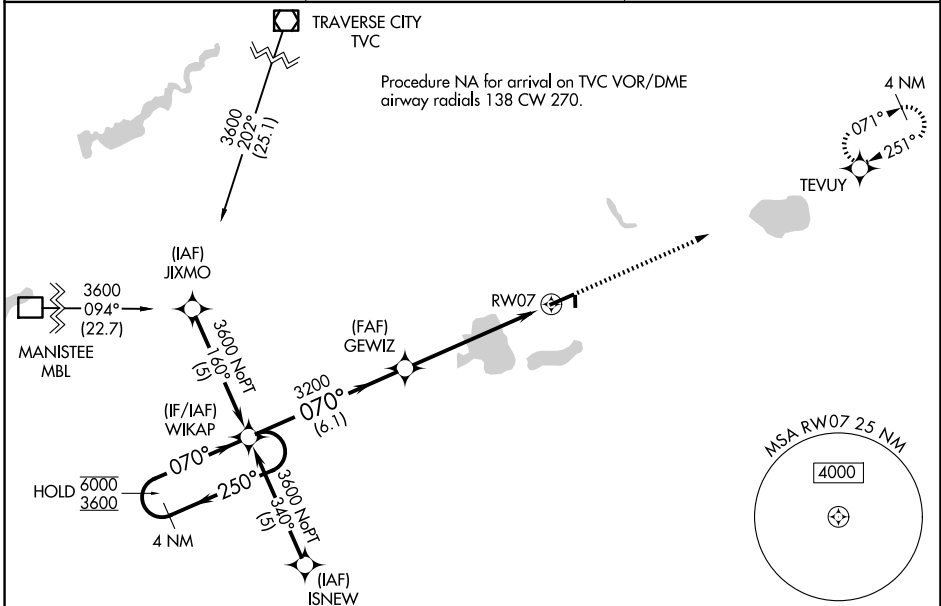
RNP APCH - GPS.

⚠ Inop table does not apply to LPV all Cats and LNAV Cats A and B. For uncompensated Baro-VNAV systems, LNAV/VNAV NA below -24°C or above 54°C. Circling NA to Rwy 18 and 36. Rwy 7 helicopter visibility reduction below ¾ SM NA. For inop ALS, increase LNAV/VNAV visibility all Cats to 1½ SM.

MALSF

MISSED APPROACH:
Climb to 3000 direct TEVUY and hold.

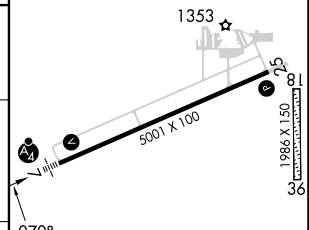
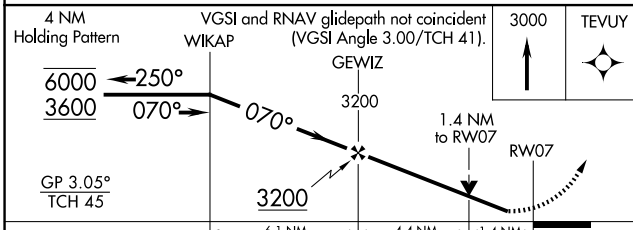
AWOS-3P 128.325	MINNEAPOLIS CENTER 132.9 338.3	UNICOM 122.8 (CTAF)
---------------------------	--	-------------------------------



EC-1, 11 JUN 2026 to 09 JUL 2026

EC-1, 11 JUN 2026 to 09 JUL 2026

ELEV 1307	TDZE 1307
-----------	-----------



CATEGORY	A	B	C	D
LPV DA		1557-¾	250 (300-¾)	
LNAV/VNAV DA		1761-1	454 (500-1)	
LNAV MDA	1780-¾	473 (500-¾)	1780-1½	473 (500-1½)
CIRCLING	1820-1 513 (600-1)	1840-1 533 (600-1)	1860-1½ 553 (600-1½)	2060-2½ 753 (800-2½)

HIRL Rwy 7-25 **⓪**
REIL Rwy 7 and 25 **⓪**