

WAAS CH <b>82231</b> <b>W11A</b>	APP CRS <b>110°</b>	Rwy Ldg 4099
		TDZE 482
		Apt Elev 482

# RNAV (GPS) RWY 11

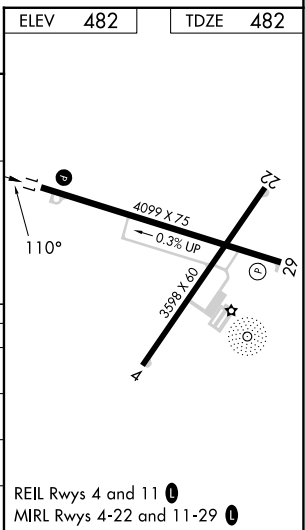
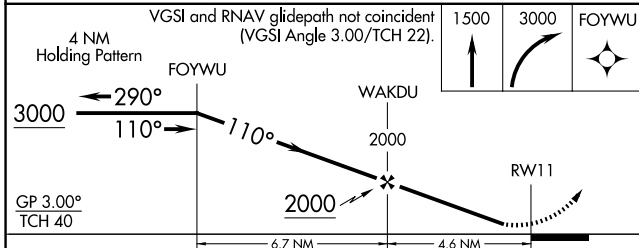
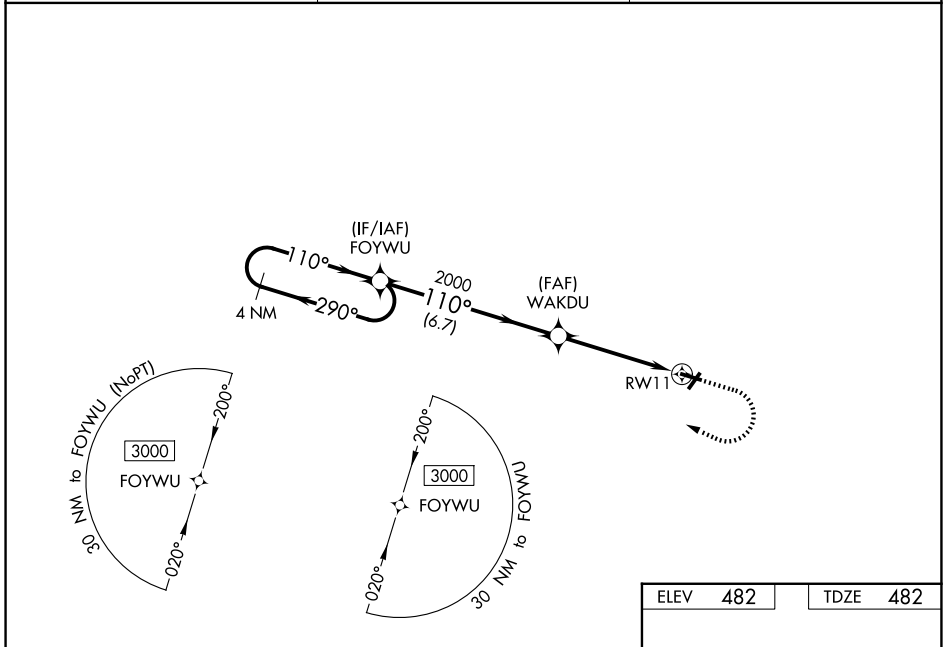
OLNEY-NOBLE (OLY)

RNP APCH.

▼ Baro-VNAV NA when using Evansville altimeter setting. For uncompensated Baro-VNAV systems, LNAV/VNAV NA below -15°C or above 54°C. When local altimeter setting not received, use  
 ▲ Evansville altimeter setting and increase all DAs 126 feet, MDAs 140 feet; increase LNAV/VNAV all Cats visibility 1/8 SM, LNAV Cat C/D 3/8 SM and Circling Cat C 1/4 SM and Cat D 1/2 SM.

MISSED APPROACH: Climb to 1500 then climbing right turn to 3000 direct FOYWU and hold.

AWOS-3 <b>119.275</b>	KANSAS CITY CENTER <b>124.3 269.15</b>	UNICOM <b>123.0 (CTAF)</b>
--------------------------	---	-------------------------------



CATEGORY	A	B	C	D
LPV DA	732-1		250 (300-1)	
LNAV/VNAV DA	962-1 5/8		480 (500-1 5/8)	
LNAV MDA	920-1	438 (500-1)	920-1 1/4	438 (500-1 1/4)
CIRCLING	960-1	478 (500-1)	960-1 1/2	1180-2 1/4
			478 (500-1 1/2)	698 (700-2 1/4)

EC-3, 11 JUN 2026 to 09 JUL 2026

EC-3, 11 JUN 2026 to 09 JUL 2026