

APP CRS	Rwy Ldg	<b>3598</b>
<b>039°</b>	TDZE	<b>472</b>
	Apf Elev	<b>482</b>

# RNAV (GPS) RWY 4

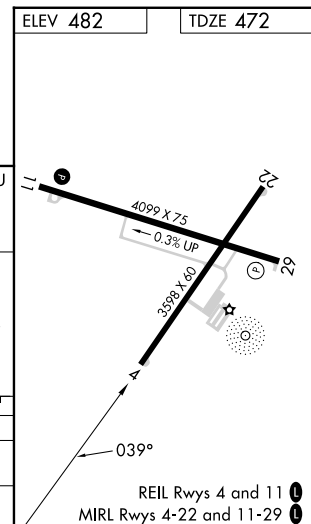
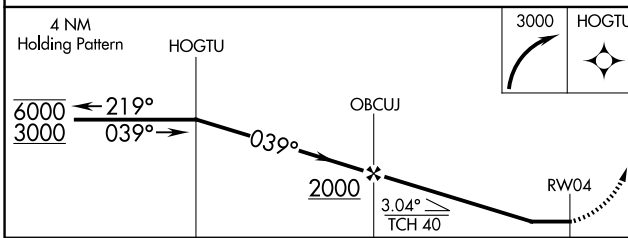
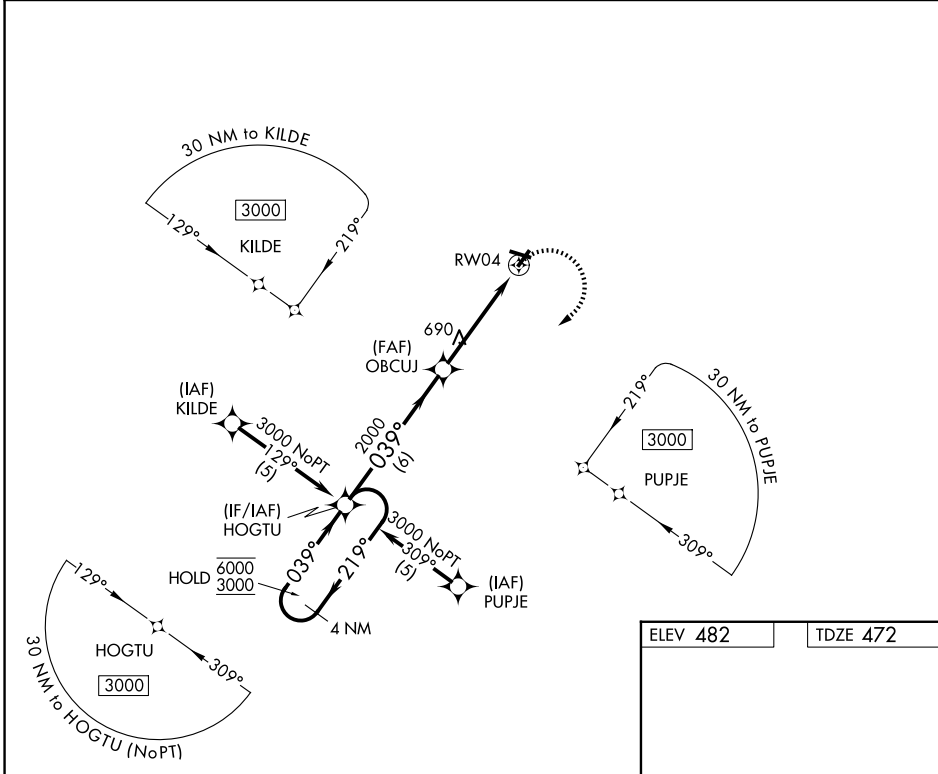
OLNEY-NOBLE (OLY)

RNP APCH.

**▼** Rwy 4 helicopter visibility reduction below 3/4 SM NA. When local altimeter setting not received, use Evansville Rgnl altimeter setting and increase all MDA 140 feet and increase LNAV Cat C/D and Circling Cat C/D visibility 1/2 mile.

**MISSED APPROACH:**  
Climbing right turn to 3000 direct HOGTU and hold.

AWOS-3 <b>119.275</b>	KANSAS CITY CENTER <b>124.3 269.15</b>	UNICOM <b>123.0 (CTAF) ①</b>
--------------------------	---	---------------------------------



CATEGORY	A	B	C	D
LNAV MDA	940-1	468 (500-1)	940-1 3/8	468 (500-1 3/8)
CIRCLING	960-1	478 (500-1)	960-1 1/2	1180-2 1/4
			478 (500-1 1/2)	698 (700-2 1/4)

EC-3, 11 JUN 2026 to 09 JUL 2026

EC-3, 11 JUN 2026 to 09 JUL 2026