

APP CRS 263°	Rwy Ldg 3779
	TDZE 632
	Apt Elev 634

RNAV (GPS) RWY 26

GRIFFITH-MERRILLVILLE (Ø5C)

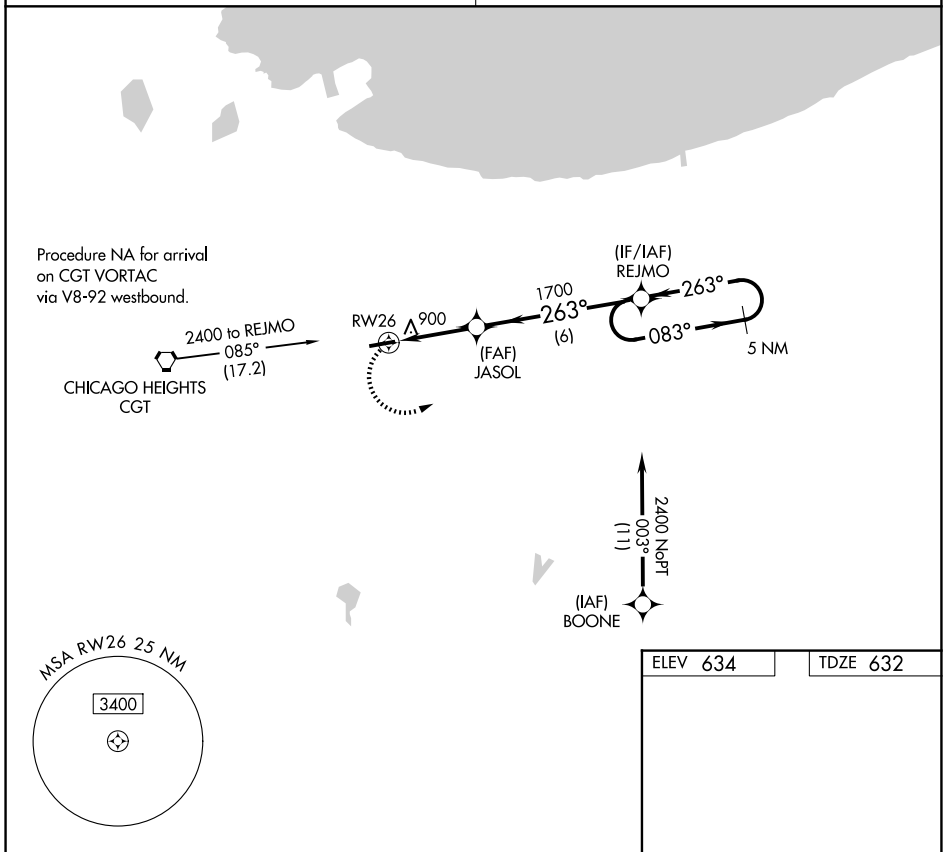
RNP APCH

Obtain local altimeter setting on CTAF; when not received use Chicago Midway Intl altimeter setting and increase all MDAs 60 feet. Visibility reduction by helicopters NA. Procedure NA at night.

MISSED APPROACH: Climbing left turn to 2400 direct REJMO and hold.

CHICAGO APP CON
133.1 285.6

UNICOM
123.0 (CTAF)



ELEV 634	TDZE 632
----------	----------

5 NM Holding Pattern

REIL Rwy 8 and 26
MIRL Rwy 8-26

2400	REJMO	VGSI and descent angles not coincident (VGSI Angle 4.00/TCH 33).	5 NM Holding Pattern
		JASOL	REJMO
RWY 26		1700	2400
3.2 NM		6 NM	
3.03° TCH 33		083°	263°
CATEGORY	A	B	C D
LNAV MDA	1160-1	528 (600-1)	NA
CIRCLING	1200-1	566 (600-1)	NA

EC-2, 11 JUN 2026 to 09 JUL 2026

EC-2, 11 JUN 2026 to 09 JUL 2026