

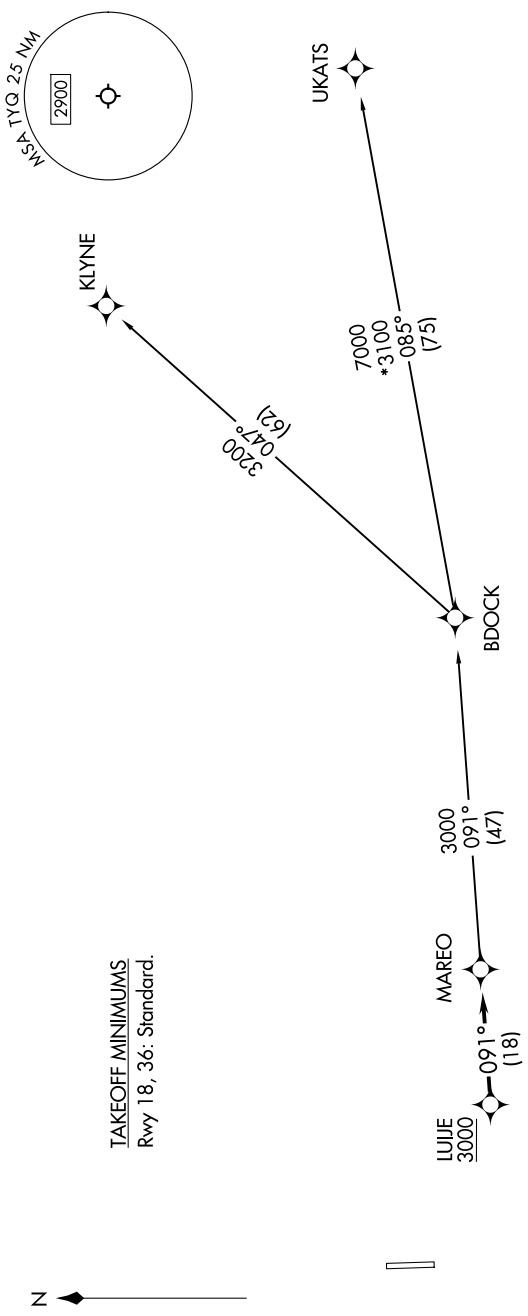
MAREO ONE DEPARTURE (RNAV)

EC-2, 11 JUN 2026 to 09 JUL 2026

INDIANAPOLIS DEP CON
124.65 127.15 317.8
CLNC DEL
118.175

RNAV 1 - DME/DME/IRU or GPS
required.
RADAR required.

**TOP ALTITUDE:
(JETS) 5000
(PROPS) 3000**



TAKEOFF MINIMUMS
Rwy 18, 36: Standard.

NOTE: Chart not to scale.

DEPARTURE ROUTE DESCRIPTION

ALL RUNWAYS: Climb on assigned heading for vectors to LUJIE on track 091° to MAREO, then on transition. Maintain (Jets) 5000/(Props) 3000, expect filed altitude 10 minutes after departure.

KLYNE TRANSITION (MAREO1.KLYNE):
UKATS TRANSITION (MAREO1.UKATS):

EC-2, 11 JUN 2026 to 09 JUL 2026