

RNAV (GPS) RWY 18

INDIANAPOLIS EXEC (TYQ)

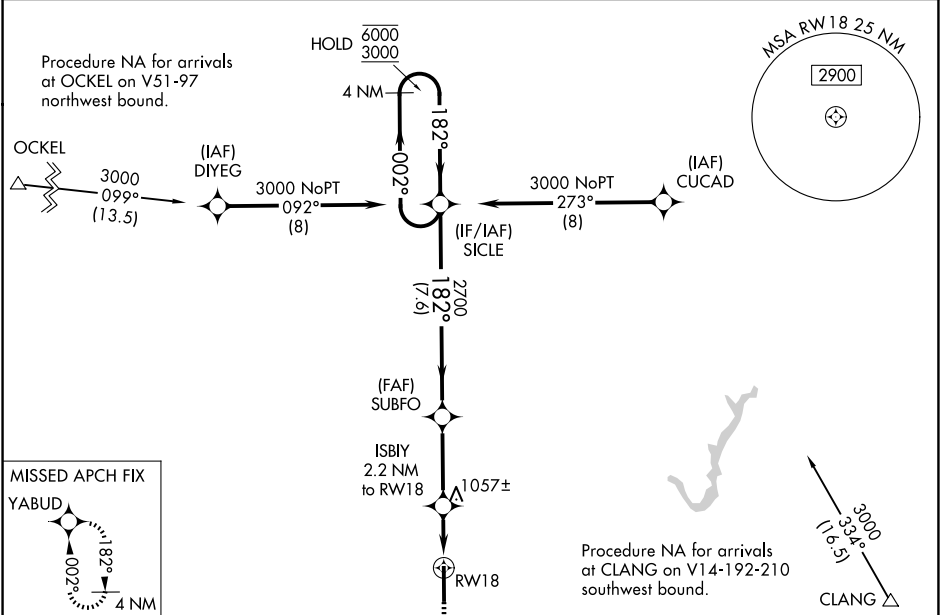
APP CRS	Rwy Ldg	7001
182°	TDZE	922
	Apt Elev	922

RNP APCH - GPS.

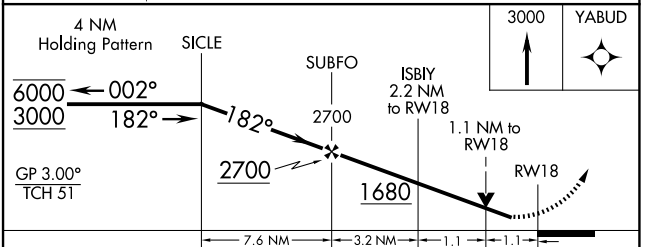
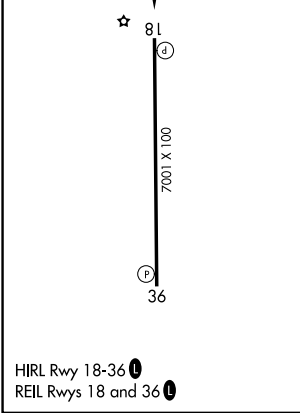
▼ Rwy 18 helicopter visibility reduction below $\frac{3}{4}$ SM NA. For uncompensated Baro-VNAV systems, LNAV/VNAV NA below -16°C or above 54°C.

▲ MISSED APPROACH: Climb to 3000 direct YABUD and hold.

AWOS-3PT 120.725	INDIANAPOLIS APP CON 124.65 127.15 317.8	CLNC DEL 118.175	UNICOM 123.05 (CTAF)
----------------------------	--	----------------------------	--------------------------------



ELEV 922	TDZE 922
----------	----------



CATEGORY	A	B	C	D
LNAV/VNAV DA	1216-7/8 294 (300-7/8)			
LNAV MDA	1320-1	398 (400-1)	1320-1 1/8	398 (400-1 1/8)
CIRCLING	1380-1	458 (500-1)	1440-1 1/2 518 (600-1 1/2)	1480-2 558 (600-2)

EC-2, 11 JUN 2026 to 09 JUL 2026

EC-2, 11 JUN 2026 to 09 JUL 2026