

WAAS CH 87130 W35A	APP CRS 353°	Rwy Ldg TDZE Apt Elev	5501 580 592
--	------------------------	-----------------------------	---

RNAV (GPS) RWY 35

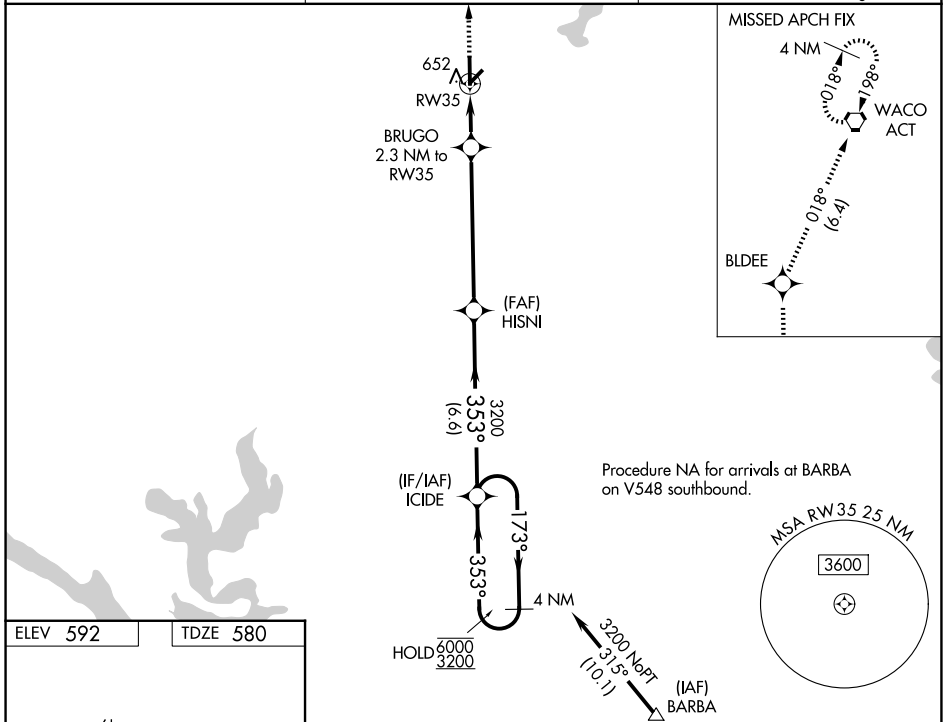
MC GREGOR EXEC (PWG)

RNP APCH - GPS.

▼ Rwy 35 helicopter visibility reduction below $\frac{3}{4}$ SM NA. For uncompensated Baro-VNAV systems, LNAV/VNAV NA below -7°C or above 54°C . Baro-VNAV and VDP NA when using ACT altimeter setting. Circling Rwy 4/22 NA at night. When local altimeter setting not received, use ATC altimeter setting and increase all DA to 861 feet and all visibilities $\frac{1}{2}$ SM; increase all MDAs 40 feet and LNAV visibility Cat C $\frac{1}{2}$ SM, and Circling visibility Cat C $\frac{1}{4}$ SM.

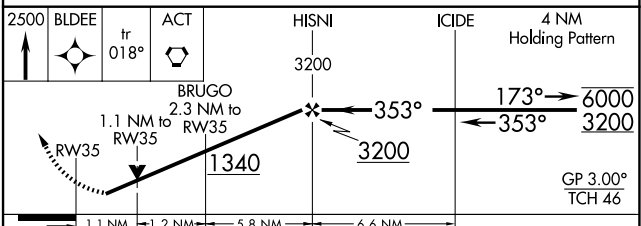
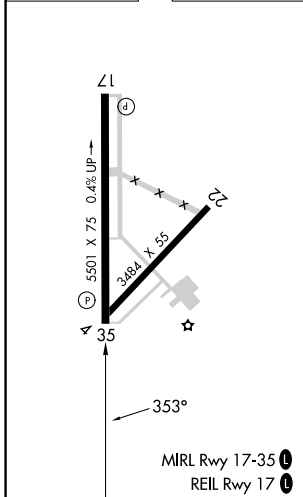
MISSED APPROACH:
Climb to 2500 direct BLDEE and on track 018° to ACT VORTAC and hold.

AWOS-3PT 135.525	WACO APP CON* 127.65 352.0	UNICOM 123.05 (CTAF)
----------------------------	--------------------------------------	--------------------------------



Procedure NA for arrivals at BARBA on V548 southbound.

ELEV 592	TDZE 580
----------	----------



CATEGORY	A	B	C	D
LPV DA	830- $\frac{3}{4}$	250 (300- $\frac{3}{4}$)		NA
LNAV/VNAV DA	830- $\frac{3}{4}$	250 (300- $\frac{3}{4}$)		NA
LNAV MDA	960-1	380 (400-1)		NA
CIRCLING	1020-1 428 (500-1)	1060-1 468 (500-1)	1300-2 708 (800-2)	NA