

VORTAC ACT	APP CRS	Rwy Ldg	5501
115.3	185°	TDZE	592
Chan 100		Apt Elev	592

VOR RWY 17

MC GREGOR EXEC (PWG)

DME required.

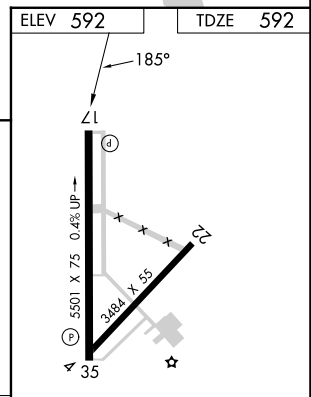
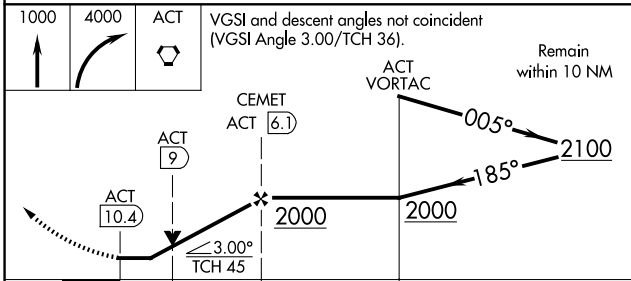
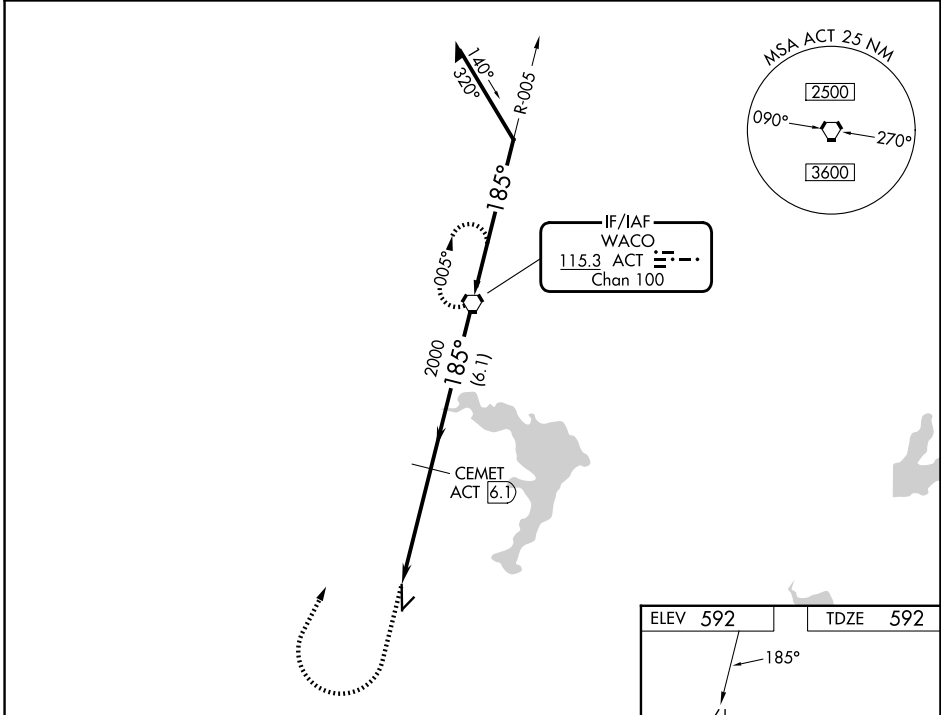
⚠ Circling Rwy 4/22 NA at night. VDP NA when using ACT altimeter setting. When local altimeter setting not received, use ACT altimeter setting and increase all MDAs 40 feet and Circling visibility Cat C ¼ SM.

ASR

MISSED APPROACH: Climb to 1000 then climbing right turn to 4000 direct ACT VORTAC and hold, continue climb-in-hold to 4000.

AWOS-3PT	WACO APP CON★
135.525	127.65 352.0

UNICOM
123.05 (CTAF) ①



CATEGORY	A	B	C	D
S-17	1060-1 468 (500-1)		1060-1½ 468 (500-1½)	NA
CIRCLING	1060-1 468 (500-1)		1300-2 708 (800-2)	NA

REIL Rwy 17 ①	MIRL Rwy 17-35 ①				
FAF to MAP 4.3 NM					
Knots	60	90	120	150	180
Min:Sec	4:18	2:52	2:09	1:43	1:26

SC-3, 11 JUN 2026 to 09 JUL 2026

SC-3, 11 JUN 2026 to 09 JUL 2026