

BORRN SIX DEPARTURE (RNAV)

HOUSTON, TEXAS

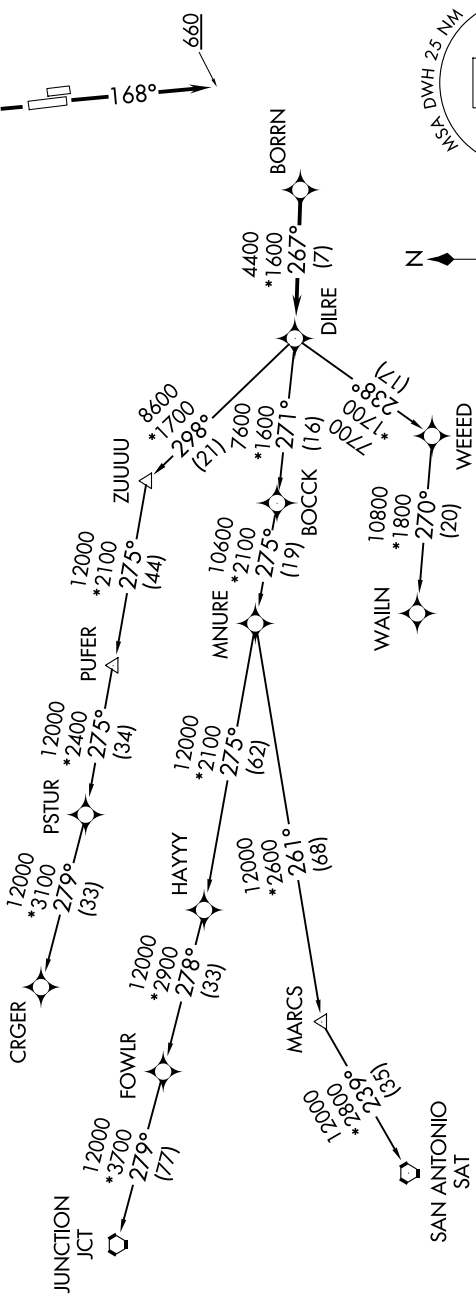
9200 100 60 09 2026 000 11 9-CC

RNAV 1 - DME/DME/IRU or GPS.
RADAR required.

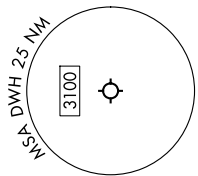
**TOP ALTITUDE:
ASSIGNED BY ATC**

ATIS
128.375
CINC DEL
119.45
GND CON
121.8 239.0
HOOKS TOWER ★
127.4 354.1 (EAST)
118.4 (CTAF) 354.1 (WEST)
HOUSTON DEP CON
123.8 257.7 (Rwys 17L/R)
119.7 281.4 (Rwys 35L/R)

TAKEOFF MINIMUMS
Rwys 17L, 35R: NA - Environmental.
Waterways 17, 35: NA - Air Traffic.
Rwys 17R, 35L: Standard with minimum
climb of 500'/NM to 660.



NOTE: CRGR-TRANSITION ATC assigned only for aircraft departing 54T, AXH, EFD, GLS, HPY, IWS, LBX, LVJ, SGR, TME, T00, T41.



NOTE: Chart not to scale.

(CONTINUED ON FOLLOWING PAGE)

BORRN SIX DEPARTURE (RNAV)

(BORRN6.BORRN) 30NOV23

HOUSTON, TEXAS

DAVID WAYNE HOOKS MEML (DWH)

SC-5, 11 JUN 2026 to 09 JUL 2026