

# LURIC EIGHT DEPARTURE (RNAV)

ATIS  
 128.375  
 CLNC DEL  
 119.45  
 GND CON  
 121.8 239.0  
 HOOKS TOWER ★  
 127.4 354.1 (EAST)  
 118.4 (CTAF) 354.1 (WEST)  
 HOUSTON DEP CON  
 119.7 281.4

**TOP ALTITUDE: ASSIGNED BY ATC**

NOTE: RADAR required.  
 NOTE: DME/DME/IRU or GPS required.  
 NOTE: RNAV 1.

### TAKEOFF MINIMUMS

Rwys 17L, 35R: NA-Environmental.  
 Waterways 17, 35: NA-Air Traffic.  
 Rwys 17R, 35L: Standard with minimum  
 climb of 500' per NM to 660.

### DEPARTURE ROUTE DESCRIPTION

TAKEOFF RUNWAY 17R: Climb on heading 168° to 660 for RADAR vectors to KNTKY, thence . . . .

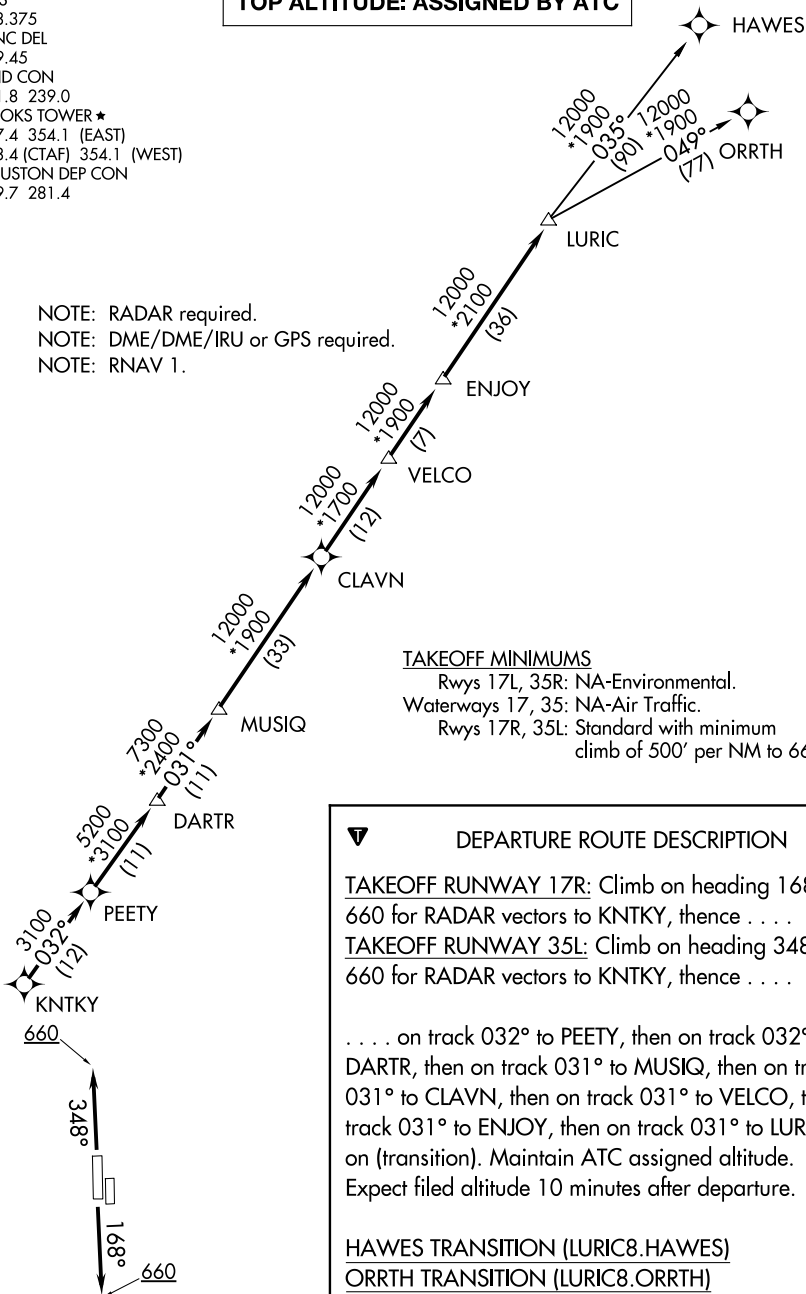
TAKEOFF RUNWAY 35L: Climb on heading 348° to 660 for RADAR vectors to KNTKY, thence . . . .

. . . . on track 032° to PEETY, then on track 032° to DARTR, then on track 031° to MUSIQ, then on track 031° to CLAVN, then on track 031° to VELCO, then on track 031° to ENJOY, then on track 031° to LURIC, then on (transition). Maintain ATC assigned altitude. Expect filed altitude 10 minutes after departure.

HAWES TRANSITION (LURIC8.HAWES)

ORRTH TRANSITION (LURIC8.ORRTH)

NOTE: Chart not to scale.



SC-5, 11 JUN 2026 to 09 JUL 2026

SC-5, 11 JUN 2026 to 09 JUL 2026