

WAAS CH <b>40234</b> <b>W17A</b>	APP CRS <b>175°</b>	Rwy Ldg <b>3704</b> TDZE <b>27</b> Apt Elev <b>28</b>
----------------------------------------	------------------------	-------------------------------------------------------------

# RNAV (GPS) RWY 17

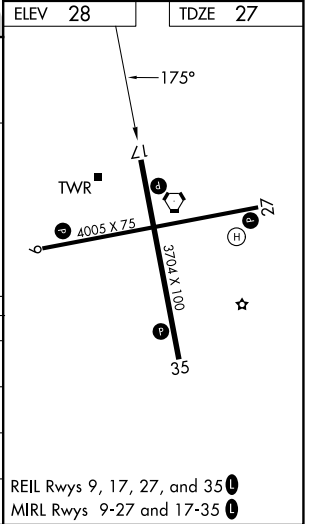
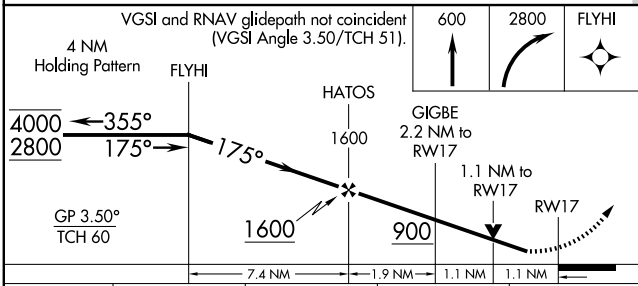
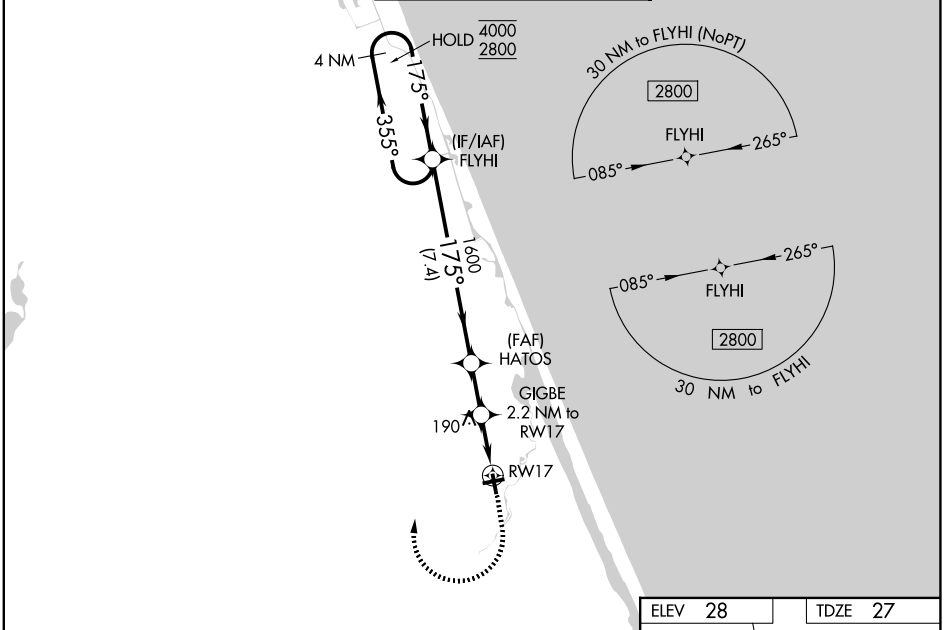
ORMOND BEACH MUNI (OMN)

RNP APCH - GPS.

⚠ For uncompensated Baro-VNAV systems, LNAV/VNAV NA below -15°C or above 54°C.  
 ⚠ Baro-VNAV and VDP NA when using DAB altimeter setting. Rwy 17 helicopter visibility reduction below 3/4 SM NA. When local altimeter setting not received, use DAB altimeter setting: increase LPV DA to 321 feet; increase LNAV/VNAV DA to 316 feet; increase all MDAs 20 feet.

MISSED APPROACH: Climb to 600 then climbing right turn to 2800 direct FLYHI and hold, continue climb-in-hold to 2800.

ATIS <b>118.475</b>	DAYTONA APP CON <b>125.8 269.075</b>	ORMOND BEACH TOWER ★ <b>119.075</b> (CTAF)	GND CON <b>121.625</b>	UNICOM <b>123.05</b>
------------------------	-----------------------------------------	-----------------------------------------------	---------------------------	-------------------------



CATEGORY	A	B	C	D
LPV DA	302-7/8	275 (300-7/8)		NA
LNAV/VNAV DA	297-7/8	270 (300-7/8)		NA
LNAV MDA	500-1	473 (500-1)	500-1 3/8 473 (500-1 3/8)	NA
CIRCLING	500-1	472 (500-1)	740-2 712 (800-2)	NA

SE-3, 11 JUN 2026 to 09 JUL 2026

SE-3, 11 JUN 2026 to 09 JUL 2026