

WAAS CH <b>82406</b> <b>W18A</b>	APP CRS <b>182°</b>	Rwy Ldg TDZE Apt Elev	<b>4001</b> <b>770</b> <b>770</b>
--	------------------------	-----------------------------	---

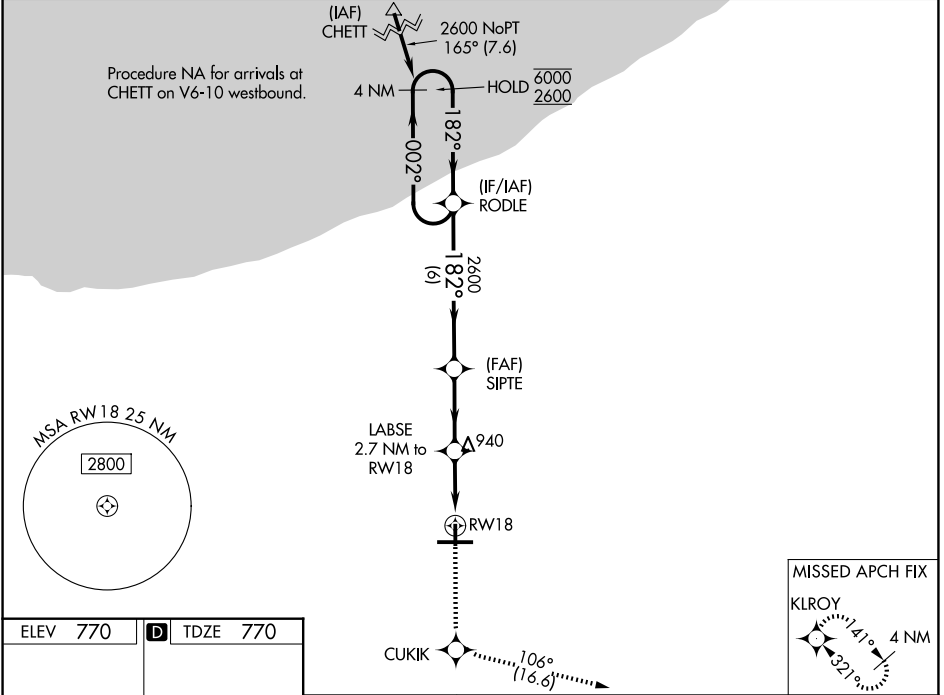
# RNAV (GPS) RWY 18

PORTER COUNTY RGNL (VPZ)

RNP APCH - GPS.

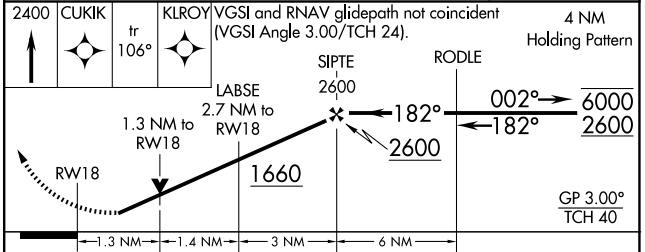
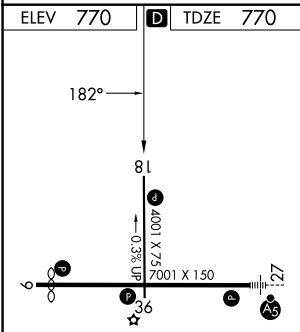
MISSED APPROACH:  
Climb to 2400 direct  
CUKIK and on track 106°  
to KLROY and hold.

ASOS <b>125,875</b>	SOUTH BEND APP CON ★ <b>132,05 257,8</b>	UNICOM <b>122,725 (CTAF) 0</b>
------------------------	---	-----------------------------------



EC-2, 11 JUN 2026 to 09 JUL 2026

EC-2, 11 JUN 2026 to 09 JUL 2026



CATEGORY	A	B	C	D
LPV DA	1059-7/8	289 (300-7/8)		NA
LNAV/VNAV DA	1200-1 1/4	430 (500-1 1/4)		NA
LNAV MDA	1200-1	430 (500-1)		NA
CIRCLING	1260-1 490 (500-1)	1300-1 530 (600-1)		NA

HIRL Rwy 9-27 0  
MIRL Rwy 18-36 0  
REIL Rwys 9, 18 and 36 0