

WAAS CH 86806 W27A	APP CRS 272°	Rwy Ldg TDZE Apt Elev	6500 770 770
--	------------------------	-----------------------------	---

RNAV (GPS) RWY 27

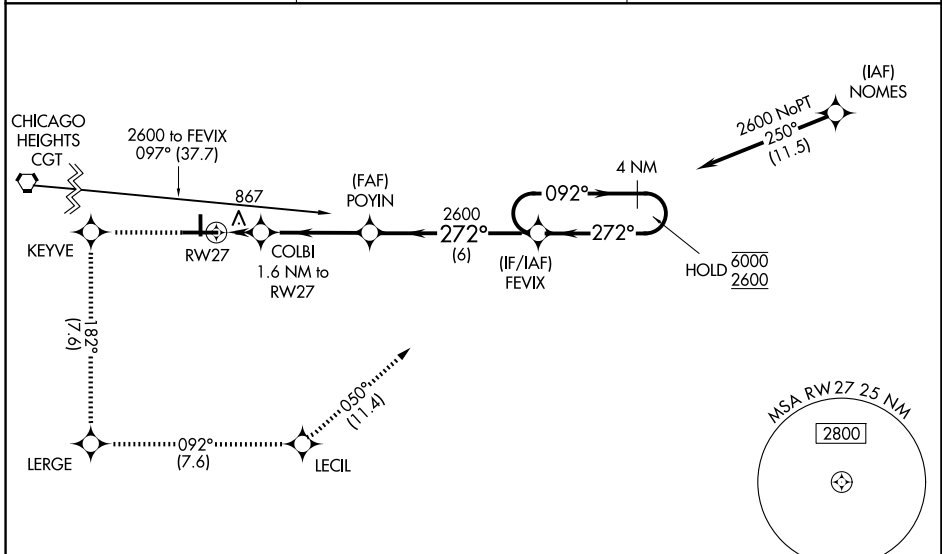
PORTER COUNTY RGNL (VPZ)

RNP APCH - GPS.

MALS

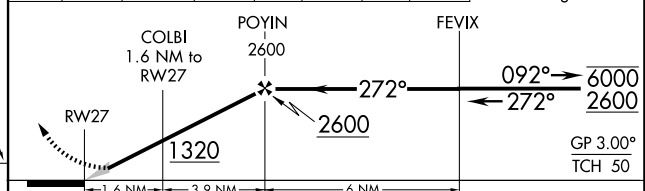
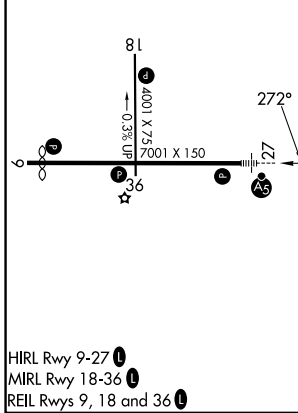
MISSED APPROACH: Climb to 2600 direct KEYVE and on track 182° to LERGE and on track 092° to LECIL and on track 050° to FEVIX and hold.

ASOS 125.875	SOUTH BEND APP CON ★ 132.05 257.8	UNICOM 122.725 (CTAF)
------------------------	---	---------------------------------



ELEV 770	D	TDZE 770
----------	----------	----------

2600 ↑	KEYVE	182°	LERGE	092°	LECIL	050°	FEVIX	4 NM Holding Pattern
--------	-------	------	-------	------	-------	------	-------	----------------------



CATEGORY	A	B	C	D
LPV DA		1020-1/2	250 (300-1/2)	
LNAV/VNAV DA		1201-3/4	431 (500-3/4)	
LNAV MDA	1180-1/2	410 (500-1/2)	1180-3/4	410 (500-3/4)
CIRCLING	1260-1 490 (500-1)	1300-1 530 (600-1)	1360-1 1/2 590 (600-1 1/2)	1620-2 3/4 850 (900-2 3/4)

EC-2, 11 JUN 2026 to 09 JUL 2026

EC-2, 11 JUN 2026 to 09 JUL 2026